

Anti-Rad21 antibody (532-631) [S1MR] (STJ11103111)

STJ11103111

GENERAL INFORMATION

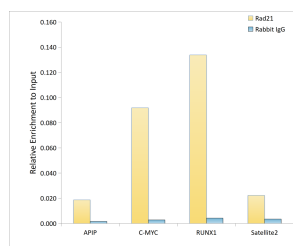
Product Type	Primary antibodies
Short Description	
Applications	WB/ELISA/ChIP/ChIP-seq
Host/Source	Rabbit
Reactivity	Human/Mouse/Rat

PRODUCT PROPERTIES

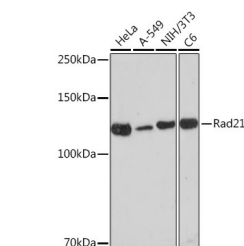
Clonality	Monoclonal
Clone ID	S1MR
Concentration	Lot specific
Conjugation	Unconjugated
Purification	Affinity purification
Dilution Range	WB:1:1000-1:2000 ELISA:Recommended starting concentration is 1 µg/mL. Please optimize the concentration based on your specific assay requirements. ChIP:5 µg antibody for 10 µg-15 µg of Chromatin ChIP-seq:1:50-1:100
Formulation	PBS with 0.02% Sodium Azide, 0.05% BSA, 50% Glycerol, pH 7.3.
Isotype	IgG
Storage Instruction	Store at -20°C for up to 1 year from the date of receipt, and avoid repeat freeze-thaw cycles.

TARGET INFORMATION

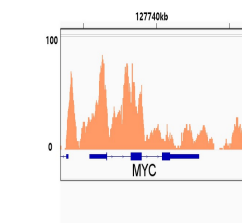
Gene ID	5885
Gene Symbol	RAD21
Uniprot ID	RAD21_HUMAN
Immunogen	
Immunogen Region	532-631
Specificity	A synthetic peptide corresponding to a sequence within amino acids 532-631 of human Rad21 (O60216).
Immunogen Sequence	EKEDDEEEEDASGGDQDQ EERRWNKRTQQMLHGLQRAL AKTGAESISLLELCRNTNRK QAAAKFYSFLVLKKQQAIEL TQEEPYSDIATPGPRFHII



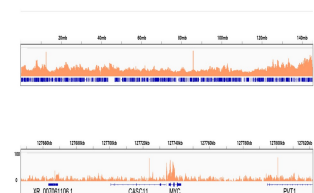
Chromatin immunoprecipitation analysis of extracts of A-549 cells, using Rad21 antibody (STJ11103111) and rabbit IgG. The amount of immunoprecipitated DNA was checked by quantitative PCR. Histogram was constructed by the ratios of the immunoprecipitated DNA to the input.



Western blot analysis of various lysates using Rad21 Rabbit monoclonal antibody (STJ11103111) at 1:1000 dilution. Secondary antibody: HRP Goat Anti-Rabbit IgG (H+L) (STJS000856) at 1:10000 dilution. Lysates/proteins: 25 µg per lane. Blocking buffer: 3% nonfat dry milk in TBST. Detection: ECL Enhanced Kit. Exposure time: 180s.



Chromatin immunoprecipitation was performed with 10. 7 µg of cross-linked chromatin from A-549 cells using 5 µg of Rad21 Rabbit monoclonal antibody (STJ11103111). DNA libraries were prepared using Scale ssDNA-seq Lib Prep Kit for Illumina V2 (RK202226). The ChIP-seq results indicate the enrichment pattern of Rad21 in the representative genomic region surrounding MYC gene.



Chromatin immunoprecipitation was performed with 10. 7 µg of cross-linked chromatin from A-549 cells using 5 µg of Rad21 Rabbit monoclonal antibody (STJ11103111). DNA libraries were prepared using Scale ssDNA-seq Lib Prep Kit for Illumina V2 (RK202226). The ChIP-seq results indicate the enrichment pattern of Rad21 across chromosome 8 (upper panel) and the genomic region encompassing MYC, a representative gene enriched in Rad21 (lower panel).

This product is suitable for in-vitro studies under the RESEARCH USE ONLY [RUO] licence. This product must not be used as for diagnostic or other medical purposes.
St John's Laboratory Ltd, Knowledge Dock Business Centre, University Way, London, E16 2RD | Tel: 0208 223 3081