

Anti-Human IgA antibody (1-353) [S6MR] (STJ11103086)

GENERAL INFORMATION

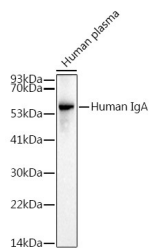
Product Type	Primary antibodies
Short Description	
Applications	WB/ELISA
Host/Source	Rabbit
Reactivity	Human

PRODUCT PROPERTIES

Clonality	Monoclonal
Clone ID	S6MR
Concentration	Lot specific
Conjugation	Unconjugated
Purification	Affinity purification
Dilution	WB:1:500-1:1000
Range	ELISA:Recommended starting concentration is 1 Mu g/mL. Please optimize the concentration based on your specific assay requirements.
Formulation	PBS with 0.02% Sodium Azide, 0.05% BSA, 50% Glycerol, pH 7.3.
Isotype	IgG
Storage Instruction	Store at -20°C for up to 1 year from the date of receipt, and avoid repeat freeze-thaw cycles.

TARGET INFORMATION

Gene ID	NA
Gene Symbol	IGHA1 IGHA2
Uniprot ID	IGHA1_HUMAN IGHA2_HUMAN
Immunogen	1-353
Immunogen Region	
Specificity	Recombinant fusion protein containing a sequence corresponding to amino acids 1-353 of human IgA (P01876).
Immunogen Sequence	ASPTSPKVFPLSLCSTQPDG NVVIACLVQGFPPQEPLSVT WSESGQGVTARNFPPSQDAS GDLYTTSSQLTLPATQCLAG KSVTCHVKHYTNPSQDVTVP CPVPSTPPTPSPSTPPTPSP SCCHPRLSLHRPALEDLLG SEANLTCTLTGLRDASGVTF TWTPSSGKSAVQGPPERDLC GCYSVSSVLPGCAEPWNHGK TFTCTAAYPESKTPLTATLS KSGNTFRPEVHLLPPSEE



Western blot analysis of extracts of Human plasma, using Human IgA antibody (STJ11103086) at 1:1000 dilution. Secondary antibody: HRP Goat Anti-Rabbit IgG (H+L) (STJ5000858) at 1:10000 dilution. Lysates/proteins: 25 Mu g per lane. Blocking buffer: 3% nonfat dry milk in TBST. Detection: ECL Basic Kit. Exposure time: 1s.

This product is suitable for in-vitro studies under the RESEARCH USE ONLY [RUO] licence. This product must not be used as for diagnostic or other medical purposes.
St John's Laboratory Ltd, Knowledge Dock Business Centre, University Way, London, E16 2RD | Tel: 0208 223 3081