

Anti-Engrailed 1 antibody (293-392) [S0MR] (STJ11103080)

STJ11103080

GENERAL INFORMATION

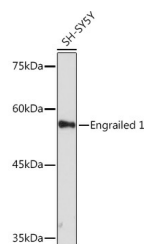
Product Type	Primary antibodies
Short Description	
Applications	WB/ELISA
Host/Source	Rabbit
Reactivity	Human/Mouse/Rat

PRODUCT PROPERTIES

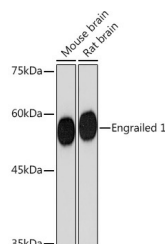
Clonality	Monoclonal
Clone ID	S0MR
Concentration	Lot specific
Conjugation	Unconjugated
Purification	Affinity purification
Dilution Range	WB:1:1000-1:2000 ELISA:Recommended starting concentration is 1 Mu g/mL. Please optimize the concentration based on your specific assay requirements.
Formulation	PBS with 0.02% Sodium Azide, 0.05% BSA, 50% Glycerol, pH 7.3.
Isotype	IgG
Storage Instruction	Store at -20°C for up to 1 year from the date of receipt, and avoid repeat freeze-thaw cycles.

TARGET INFORMATION

Gene ID	2019
Gene Symbol	EN1
Uniprot ID	HME1_HUMAN
Immunogen	
Immunogen	293-392
Region	
Specificity	A synthetic peptide corresponding to a sequence within amino acids 293-392 of human Engrailed 1 (Q05925).
Immunogen	KLKKKKNEKEDKRPRTAFTA EQLQRLKAEFQANRYITEQR RQTLAQELSLNESQIKIWFQ NKRAKIKKATGIKNGLALHL
Sequence	MAQGLYNHSTTTVQDKDESE



Western blot analysis of extracts of SH-SY5Y cells, using Engrailed 1 Rabbit monoclonal antibody (STJ11103080) at 1:1000 dilution. Secondary antibody: HRP-Coat Anti-Rabbit IgG (H+L) (STJ5000856) at 1:10000 dilution. Lysates/proteins: 25 Mu g per lane. Blocking buffer: 3% nonfat dry milk in TBST. Detection: ECL Basic Kit. Exposure time: 180s.



Western blot analysis of extracts of various cell lines, using Engrailed 1 Rabbit monoclonal antibody (STJ11103080) at 1:1000 dilution. Secondary antibody: HRP-Coat Anti-Rabbit IgG (H+L) (STJ5000856) at 1:10000 dilution. Lysates/proteins: 25 Mu g per lane. Blocking buffer: 3% nonfat dry milk in TBST. Detection: ECL Basic Kit. Exposure time: 90s.

This product is suitable for in-vitro studies under the RESEARCH USE ONLY [RUO] licence. This product must not be used as for diagnostic or other medical purposes.
St John's Laboratory Ltd, Knowledge Dock Business Centre, University Way, London, E16 2RD | Tel: 0208 223 3081