

Anti-Cytochrome P450 4A antibody (50-150) [S6MR] (STJ11103076)
STJ11103076

GENERAL INFORMATION

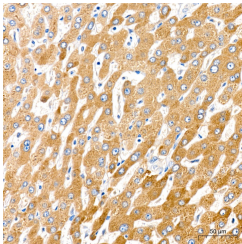
Product Type	Primary antibodies
Short Description	
Applications	WB/IHC-P/ELISA
Host/Source	Rabbit
Reactivity	Human/Mouse/Rat

PRODUCT PROPERTIES

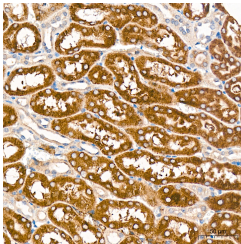
Clonality	Monoclonal
Clone ID	S6MR
Concentration	Lot specific
Conjugation	Unconjugated
Purification	Affinity purification
Dilution Range	WB:1:500-1:2000 IHC-P:1:50-1:200 ELISA:Recommended starting concentration is 1 μ g/mL. Please optimize the concentration based on your specific assay requirements.
Formulation	PBS with 0.02% Sodium Azide, 0.05% BSA, 50% Glycerol, pH 7.3.
Isotype	IgG
Storage Instruction	Store at -20°C for up to 1 year from the date of receipt, and avoid repeat freeze-thaw cycles.

TARGET INFORMATION

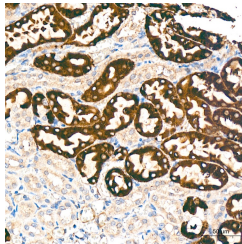
Gene ID	1579
Gene Symbol	CYP4A11
Uniprot ID	CP4AB_HUMAN
Immunogen	
Immunogen Region	50-150
Specificity	A synthetic peptide corresponding to a sequence within amino acids 50-150 of human Cytochrome P450 4A (CYP4A11) (CYP4A11) (Q02928).
Immunogen Sequence	QFPCCPSHWLFGHIQELQQD QELQRIQKWVETFPSACPHW LWGGKVRVQLYDPDYMKVIL GRSDPKSHGSYRFLAPWIGY GLLLNLGQTWFQHRRLTPA F



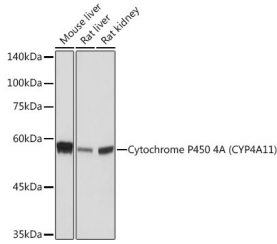
Immunohistochemistry analysis of Cytochrome P450 4A (CYP4A11) in paraffin-embedded human liver tissue using Cytochrome P450 4A (CYP4A11) Rabbit monoclonal antibody (STJ11103076) at a dilution of 1:200 (40x lens). High pressure antigen retrieval was performed with 0.01 M citrate buffer (pH 6.0) prior to immunohistochemistry staining.



Immunohistochemistry analysis of Cytochrome P450 4A (CYP4A11) in paraffin-embedded mouse kidney tissue using Cytochrome P450 4A (CYP4A11) Rabbit monoclonal antibody (STJ11103076) at a dilution of 1:200 (40x lens). High pressure antigen retrieval was performed with 0.01 M citrate buffer (pH 6.0) prior to immunohistochemistry staining.



Immunohistochemistry analysis of Cytochrome P450 4A (CYP4A11) in paraffin-embedded rat kidney tissue using Cytochrome P450 4A (CYP4A11) Rabbit monoclonal antibody (STJ11103076) at a dilution of 1:200 (40x lens). High pressure antigen retrieval was performed with 0.01 M citrate buffer (pH 6.0) prior to immunohistochemistry staining.



Western blot analysis of various lysates using Cytochrome P450 4A (CYP4A11) Rabbit monoclonal antibody (STJ11103076) at 1:1000 dilution. Secondary antibody: HRP Goat Anti-Rabbit IgG (H+L) (STJ5000856) at 1:10000 dilution. Lysates/proteins: 25 μ g per lane. Blocking buffer: 3% nonfat dry milk in TBST. Detection: ECL Basic Kit. Exposure time: 10s.

This product is suitable for in-vitro studies under the RESEARCH USE ONLY [RUO] licence. This product must not be used as for diagnostic or other medical purposes.
St John's Laboratory Ltd, Knowledge Dock Business Centre, University Way, London, E16 2RD | Tel: 0208 223 3081