

**Anti-ENTPD5 antibody (100-200) [S9MR] (STJ11103069)**  
STJ11103069

**GENERAL INFORMATION**

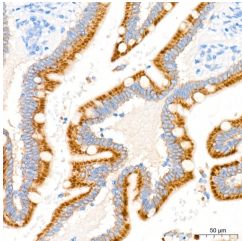
<b>Product Type</b>	Primary antibodies
<b>Short Description</b>	
<b>Applications</b>	WB/IHC-P/ELISA
<b>Host/Source</b>	Rabbit
<b>Reactivity</b>	Human/Mouse/Rat

**PRODUCT PROPERTIES**

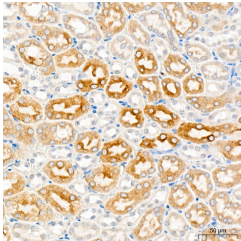
<b>Clonality</b>	Monoclonal
<b>Clone ID</b>	S9MR
<b>Concentration</b>	Lot specific
<b>Conjugation</b>	Unconjugated
<b>Purification</b>	Affinity purification
<b>Dilution Range</b>	WB:1:1000-1:3000 IHC-P:1:50-1:200 ELISA:Recommended starting concentration is 1 Mu g/mL. Please optimize the concentration based on your specific assay requirements.
<b>Formulation</b>	PBS with 0.02% Sodium Azide, 0.05% BSA, 50% Glycerol, pH 7.3.
<b>Isotype</b>	IgG
<b>Storage Instruction</b>	Store at -20°C for up to 1 year from the date of receipt, and avoid repeat freeze-thaw cycles.

**TARGET INFORMATION**

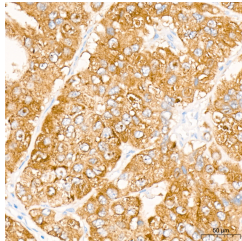
<b>Gene ID</b>	957
<b>Gene Symbol</b>	ENTPD5
<b>Uniprot ID</b>	ENTP5_HUMAN
<b>Immunogen</b>	
<b>Immunogen Region</b>	100-200
<b>Specificity</b>	Recombinant fusion protein containing a sequence corresponding to amino acids 100-200 of human ENTDP5 (O75356).
<b>Immunogen Sequence</b>	GAETVQGLLEVAKDSIPRSH WKKTPVVLKATAGLRLLPEH KAKALLFEVKEIFRKSPFLV PKGSVSIMDGSDEGILAWVT VNFLTGQLHGHRQETVGTLD L



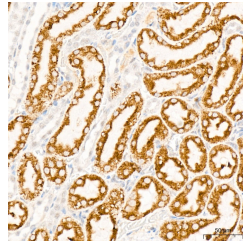
Immunohistochemistry analysis of ENTDP5 in paraffin-embedded human small intestine tissue using ENTDP5 Rabbit monoclonal antibody (STJ11103069) at a dilution of 1:200 (40x lens). High pressure antigen retrieval was performed with 0.01 M citrate buffer (pH 6.0) prior to immunohistochemistry staining.



Immunohistochemistry analysis of ENTDP5 in paraffin-embedded mouse kidney tissue using ENTDP5 Rabbit monoclonal antibody (STJ11103069) at a dilution of 1:200 (40x lens). High pressure antigen retrieval was performed with 0.01 M citrate buffer (pH 6.0) prior to immunohistochemistry staining.



Immunohistochemistry analysis of ENTDP5 in paraffin-embedded rat liver tissue using ENTDP5 Rabbit monoclonal antibody (STJ11103069) at a dilution of 1:200 (40x lens). High pressure antigen retrieval was performed with 0.01 M citrate buffer (pH 6.0) prior to immunohistochemistry staining.



Immunohistochemistry analysis of ENTDP5 in paraffin-embedded rat kidney tissue using ENTDP5 Rabbit monoclonal antibody (STJ11103069) at a dilution of 1:200 (40x lens). High pressure antigen retrieval was performed with 0.01 M citrate buffer (pH 6.0) prior to immunohistochemistry staining.