

Anti-ENTPD5 antibody (300-400) [S6MR] (STJ11103066)

STJ11103066

GENERAL INFORMATION

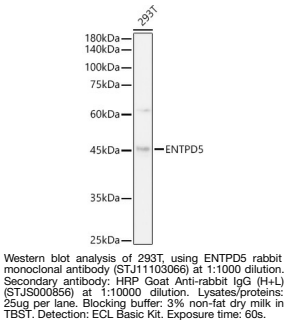
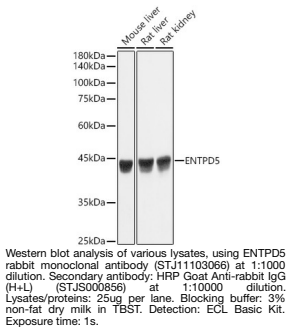
Product Type	Primary antibodies
Short Description	
Applications	WB/ELISA
Host/Source	Rabbit
Reactivity	Mouse/Rat

PRODUCT PROPERTIES

Clonality	Monoclonal
Clone ID	S6MR
Concentration	Lot specific
Conjugation	Unconjugated
Purification	Affinity purification
Dilution Range	WB:1:1000-1:5000 ELISA:Recommended starting concentration is 1 Mu g/mL. Please optimize the concentration based on your specific assay requirements.
Formulation	PBS with 0.02% Sodium Azide, 0.05% BSA, 50% Glycerol, pH 7.3.
Isotype	IgG
Storage	Store at -20°C for up to 1 year from the date of receipt, and avoid repeat freeze-thaw cycles.
Instruction	

TARGET INFORMATION

Gene ID	957
Gene Symbol	ENTPD5
Uniprot ID	ENTP5_HUMAN
Immunogen	
Immunogen	300-400
Region	
Specificity	Recombinant fusion protein containing a sequence corresponding to amino acids 300-400 of human ENTDP5 (O75356).
Immunogen	FEPCYAEVLRVVRGKLHQPE EVQRGSFYAFSYYYDRAVD T DMIDYEKGKILKVEDFERKA REVCDNLENFTSGSPFLCMD
Sequence	LSYITALLKDGFGFADSTVL Q



This product is suitable for in-vitro studies under the RESEARCH USE ONLY [RUO] licence. This product must not be used as for diagnostic or other medical purposes.
St John's Laboratory Ltd, Knowledge Dock Business Centre, University Way, London, E16 2RD | Tel: 0208 223 3081