

**Anti-Calsequestrin 1 antibody (100-200) [S5MR] (STJ11103065)**  
STJ11103065

**GENERAL INFORMATION**

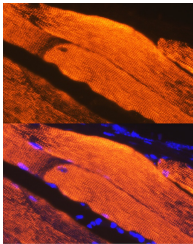
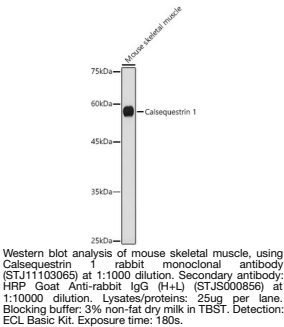
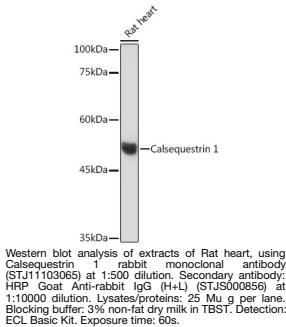
<b>Product Type</b>	Primary antibodies
<b>Short Description</b>	
<b>Applications</b>	WB/IF/CC/ELISA
<b>Host/Source</b>	Rabbit
<b>Reactivity</b>	Mouse/Rat

**PRODUCT PROPERTIES**

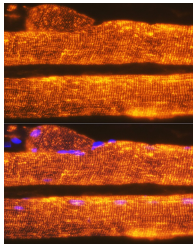
<b>Clonality</b>	Monoclonal
<b>Clone ID</b>	S5MR
<b>Concentration</b>	Lot specific
<b>Conjugation</b>	Unconjugated
<b>Purification</b>	Affinity purification
<b>Dilution Range</b>	WB:1:500-1:1000 IF/CC:1:50-1:200 ELISA:Recommended starting concentration is 1 Mu g/mL. Please optimize the concentration based on your specific assay requirements.
<b>Formulation</b>	PBS with 0.02% Sodium Azide, 0.05% BSA, 50% Glycerol, pH 7.3.
<b>Isotype</b>	IgG
<b>Storage Instruction</b>	Store at-20°C for up to 1 year from the date of receipt, and avoid repeat freeze-thaw cycles.

**TARGET INFORMATION**

<b>Gene ID</b>	844
<b>Gene Symbol</b>	CASQ1
<b>Uniprot ID</b>	CASQ1_HUMAN
<b>Immunogen</b>	
<b>Immunogen Region</b>	100-200
<b>Specificity</b>	Recombinant fusion protein containing a sequence corresponding to amino acids 100-200 of human Calsequestrin 1 (NP_001222.3).
<b>Immunogen Sequence</b>	EDKGVGFGFLVDSEKDAAVAK KLGLTEVDSMYVFKGDEVIE YDGEFSADTIVEFLLDVLED PVELIEGERELQAFENIEDE IKLIGYFKSKDSEHYKAFED A



Immunofluorescence analysis of mouse skeletal muscle using Calsequestrin 1 antibody (STJ11103065) at dilution of 1:100. Blue: DAPI for nuclear staining.



Immunofluorescence analysis of Rat skeletal muscle using Calsequestrin 1 antibody (STJ11103065) at dilution of 1:100. Blue: DAPI for nuclear staining.

This product is suitable for in-vitro studies under the RESEARCH USE ONLY [RUO] licence. This product must not be used as for diagnostic or other medical purposes.  
St John's Laboratory Ltd, Knowledge Dock Business Centre, University Way, London, E16 2RD | Tel: 0208 223 3081