

Anti-ACTN3 antibody (700-800) [S1MR] (STJ11103061)

GENERAL INFORMATION

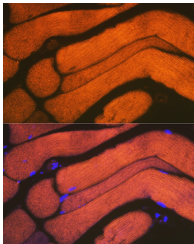
Product Type	Primary antibodies
Short Description	
Applications	WB/IF/ICC/ELISA
Host/Source	Rabbit
Reactivity	Human/Mouse/Rat

PRODUCT PROPERTIES

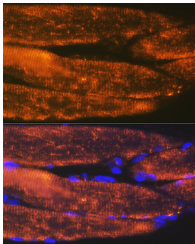
Clonality	Monoclonal
Clone ID	S1MR
Concentration	Lot specific
Conjugation	Unconjugated
Purification	Affinity purification
Dilution Range	WB:1:500-1:1000 IF/ICC:1:50-1:200 ELISA:Recommended starting concentration is 1 Mu g/mL. Please optimize the concentration based on your specific assay requirements.
Formulation	PBS with 0.02% Sodium Azide, 0.05% BSA, 50% Glycerol, pH 7.3.
Isotype	IgG
Storage Instruction	Store at -20°C for up to 1 year from the date of receipt, and avoid repeat freeze-thaw cycles.

TARGET INFORMATION

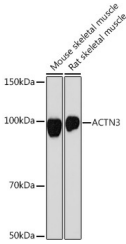
Gene ID	89
Gene Symbol	ACTN3
Uniprot ID	ACTN3_HUMAN
Immunogen	
Immunogen Region	700-800
Specificity	Recombinant fusion protein containing a sequence corresponding to amino acids 700-800 of human ACTN3 (Q08043).
Immunogen Sequence	DRLEGDHQLQLQESLVFDNKH TVYSMEHIRVGWEQLLTSIA RTINEVENQVLTRDAKGLSQ EQLNEFRASFNHFDRKQNGM MEPDDFRACLISMGYDLGEV E



Immunofluorescence analysis of mouse bone marrow cells using ACTN3 Rabbit monoclonal antibody (STJ11103061) at dilution of 1:100 (40x lens). Blue: DAPI for nuclear staining.



Immunofluorescence analysis of rat bone marrow cells using ACTN3 Rabbit monoclonal antibody (STJ11103061) at dilution of 1:100 (40x lens). Blue: DAPI for nuclear staining.



Western blot analysis of extracts of various cell lines, using ACTN3 Rabbit monoclonal antibody (STJ11103061) at 1:1000 dilution. Secondary antibody: HRP Goat Anti-Rabbit IgG (H+L) (STJS000856) at 1:10000 dilution. Lysates/proteins: 25 Mu g per lane. Blocking buffer: 3% nonfat dry milk in TBST. Detection: ECL Basic Kit. Exposure time: 90s.