

Anti-ARID1A antibody (1204-1314) [S0MR] (STJ11103040)

STJ11103040

GENERAL INFORMATION

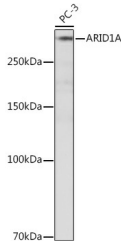
Product Type	Primary antibodies
Short Description	
Applications	WB/IHC-P/IF/ICC/ELISA
Host/Source	Rabbit
Reactivity	Human/Mouse/Rat

PRODUCT PROPERTIES

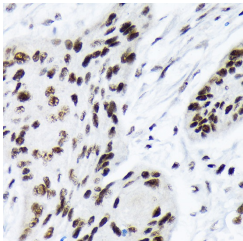
Clonality	Monoclonal
Clone ID	S0MR
Concentration	Lot specific
Conjugation	Unconjugated
Purification	Affinity purification
Dilution Range	WB:1:500-1:1000 IHC-P:1:50-1:200 IF/ICC:1:50-1:200 ELISA:Recommended starting concentration is 1 Mu g/mL. Please optimize the concentration based on your specific assay requirements.
Formulation	PBS with 0.02% Sodium Azide, 0.05% BSA, 50% Glycerol, pH 7.3.
Isotype	IgG
Storage	Store at -20°C for up to 1 year from the date of receipt, and avoid repeat freeze-thaw cycles.
Instruction	

TARGET INFORMATION

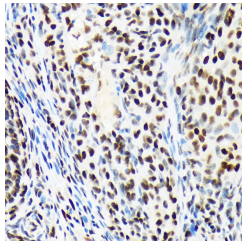
Gene ID	8289
Gene Symbol	ARID1A
Uniprot ID	ARI1A_HUMAN
Immunogen	
Immunogen Region	1204-1314
Specificity	Recombinant fusion protein containing a sequence corresponding to amino acids 1204-1314 of human ARID1A (O14497).
Immunogen Sequence	SMTFNPNGYQPSMNTSDMMGR MSYEPNKDPYGSMRKAPGSD PFMSSGQGPNGGMDPYSRA AGPGLGNVAMGPRQHYPYGG PYDRVRTEPGIGPEGNMSTG APQPNLMPNSNP



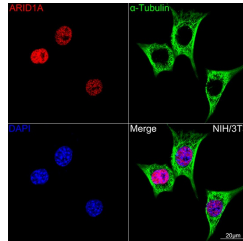
Western blot analysis of extracts of PC-3 cells, using ARID1A rabbit monoclonal antibody (STJ11103040) at 1:500 dilution. Secondary antibody: HRP Goat Anti-rabbit IgG (H+L) (STJ5000866) at 1:10000 dilution. Lysates/proteins: 25 Mu g per lane. Blocking buffer: 3% non-fat dry milk in TBST. Detection: ECL Basic Kit. Exposure time: 10s.



Immunohistochemistry analysis of paraffin-embedded human esophageal cancer using ARID1A rabbit monoclonal antibody (STJ11103040) at dilution of 1:100 (40x lens). Perform microwave antigen retrieval with 10 mM Tris/EDTA buffer pH 9.0 before commencing with immunohistochemistry staining protocol.



Immunohistochemistry analysis of paraffin-embedded rat ovary using ARID1A rabbit monoclonal antibody (STJ11103040) at dilution of 1:100 (40x lens). Perform microwave antigen retrieval with 10 mM Tris/EDTA buffer pH 9.0 before commencing with immunohistochemistry staining protocol.



Confocal imaging of NIH-3T3 cells using ARID1A rabbit monoclonal antibody (STJ11103040, dilution 1:100) (Red). The cells were counterstained with Alpha-Tubulin mouse monoclonal antibody (dilution 1:400) (Green). DAPI was used for nuclear staining (blue). Objective: 100x.

This product is suitable for in-vitro studies under the RESEARCH USE ONLY [RUO] licence. This product must not be used as for diagnostic or other medical purposes.

St John's Laboratory Ltd, Knowledge Dock Business Centre, University Way, London, E16 2RD | Tel: 0208 223 3081