

Anti-Synapsin II antibody (200-300) [S5MR] (STJ11103035)
STJ11103035

GENERAL INFORMATION

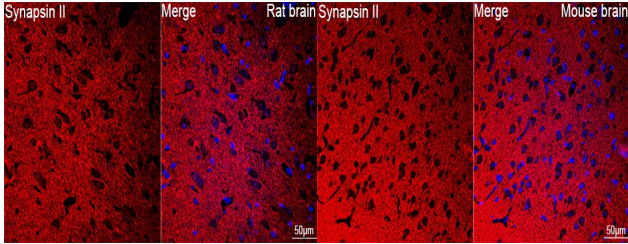
Product Type	Primary antibodies
Short Description	
Applications	WB/IF/ICC/ELISA
Host/Source	Rabbit
Reactivity	Human/Mouse/Rat

PRODUCT PROPERTIES

Clonality	Monoclonal
Clone ID	S5MR
Concentration	Lot specific
Conjugation	Unconjugated
Purification	Affinity purification
Dilution Range	WB:1:1000-1:2000 IF/ICC:1:200-1:800 ELISA:Recommended starting concentration is 1 µg/mL. Please optimize the concentration based on your specific assay requirements.
Formulation	PBS with 0.02% Sodium Azide, 0.05% BSA, 50% Glycerol, pH 7.3.
Isotype	IgG
Storage Instruction	Store at -20°C for up to 1 year from the date of receipt, and avoid repeat freeze-thaw cycles.

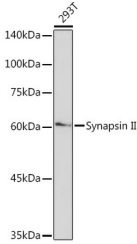
TARGET INFORMATION

Gene ID	6854
Gene Symbol	SYN2
Uniprot ID	SYN2_HUMAN
Immunogen	
Immunogen Region	200-300
Specificity	Recombinant fusion protein containing a sequence corresponding to amino acids 200-300 of human Synapsin II (Q92777).
Immunogen Sequence	HLIIGMQYAGLPINSLESI YNFCDKPWVFAQLVAIYKTL GGEKFPLIEQTYYPNHKEML TLPTFPVVKIGHAHSGMGK VKVENHYDFQDIASVVALTQ T



Confocal imaging of a paraffin-embedded Rat brain using A Synapsin II Rabbit monoclonal antibody (STJ11103035, dilution 1:100) followed by a further incubation with Cy3 Goat Anti-Rabbit IgG (H+L) (dilution 1:500) (Red). DAPI was used for nuclear staining (Blue). Objective: 40x. Perform microwave antigen retrieval with 0.01 M citrate buffer (pH 6.0) prior to IF staining.

Confocal imaging of a paraffin-embedded Mouse brain using A Synapsin II Rabbit monoclonal antibody (STJ11103035, dilution 1:100) followed by a further incubation with Cy3 Goat Anti-Rabbit IgG (H+L) (dilution 1:500) (Red). DAPI was used for nuclear staining (Blue). Objective: 40x. Perform microwave antigen retrieval with 0.01 M citrate buffer (pH 6.0) prior to IF staining.



Western blot analysis of lysates from 293T cells, using Synapsin II Rabbit monoclonal antibody (STJ11103035) at 1:1000 dilution. Secondary antibody: HRP Goat Anti-Rabbit IgG (H+L) (STJS000856) at 1:10000 dilution. Lysates/proteins: 25 µg per lane. Blocking buffer: 3% nonfat dry milk in TBST. Detection: ECL Basic Kit. Exposure time: 90s.

This product is suitable for in-vitro studies under the RESEARCH USE ONLY [RUO] licence. This product must not be used as for diagnostic or other medical purposes.
St John's Laboratory Ltd, Knowledge Dock Business Centre, University Way, London, E16 2RD | Tel: 0208 223 3081