

Anti-BCL2L14/BCLG antibody (1-250) [S0MR] (STJ11103020)
STJ11103020

GENERAL INFORMATION

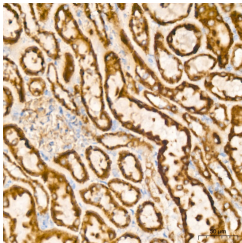
Product Type	Primary antibodies
Short Description	
Applications	WB/IHC-P/ELISA
Host/Source	Rabbit
Reactivity	Human/Mouse/Rat

PRODUCT PROPERTIES

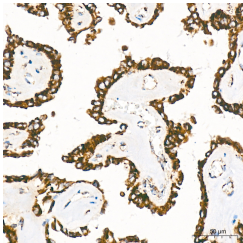
Clonality	Monoclonal
Clone ID	S0MR
Concentration	Lot specific
Conjugation	Unconjugated
Purification	Affinity purification
Dilution	WB:1:500-1:1000
Range	IHC-P:1:50-1:200
	ELISA:Recommended starting concentration is 1 Mu g/mL. Please optimize the concentration based on your specific assay requirements.
Formulation	PBS with 0.02% Sodium Azide, 0.05% BSA, 50% Glycerol, pH 7.3.
Isotype	IgG
Storage Instruction	Store at -20°C for up to 1 year from the date of receipt, and avoid repeat freeze-thaw cycles.

TARGET INFORMATION

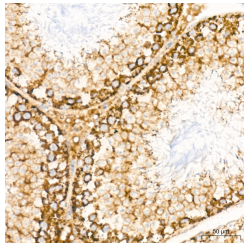
Gene ID	79370
Gene Symbol	BCL2L14
Uniprot ID	B2L14_HUMAN
Immunogen	
Immunogen Region	1-250
Specificity	Recombinant fusion protein containing a sequence corresponding to amino acids 1-250 of human BCL2L14/BCLG (Q9BZR8).
Immunogen Sequence	MCSTSGCDLEEIPLDDDDLNTIEFKILAYYTRHHVFKSTPALFSPKLLRTRLSQRGLGNCANESWTEVSWPCRNQSSEKAINLGKKKSSWKAFGGVVEKEDSQSTPAKVSAQGQRTL EYQDSHSQQWSRCLSNVEQC LEHEAVDPKVISIANRVAEIVYSWPPQATQAGGFKSKEIFVTEGLSFQLQGHVPVASSKKDEEEQILAKIVELLYSGDQLERKLKKDKALMGHFQD



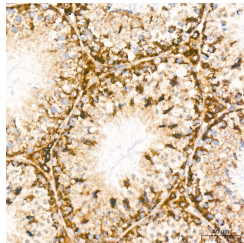
Immunohistochemistry analysis of BCL2L14/BCLG in paraffin-embedded rat kidney tissue using BCL2L14/BCLG Rabbit monoclonal antibody (STJ11103020) at a dilution of 1:200 (40x lens). High pressure antigen retrieval was performed with 0.01 M Tris-EDTA buffer (pH 9.0) prior to immunohistochemistry staining.



Immunohistochemistry analysis of BCL2L14/BCLG in paraffin-embedded human lung adenocarcinoma tissue using BCL2L14/BCLG Rabbit monoclonal antibody (STJ11103020) at a dilution of 1:200 (40x lens). High pressure antigen retrieval was performed with 0.01 M Tris-EDTA buffer (pH 9.0) prior to immunohistochemistry staining.



Immunohistochemistry analysis of BCL2L14/BCLG in paraffin-embedded rat testis tissue using BCL2L14/BCLG Rabbit monoclonal antibody (STJ11103020) at a dilution of 1:200 (40x lens). High pressure antigen retrieval was performed with 0.01 M Tris-EDTA buffer (pH 9.0) prior to immunohistochemistry staining.



Immunohistochemistry analysis of BCL2L14/BCLG in paraffin-embedded mouse testis tissue using BCL2L14/BCLG Rabbit monoclonal antibody (STJ11103020) at a dilution of 1:200 (40x lens). High pressure antigen retrieval was performed with 0.01 M Tris-EDTA buffer (pH 9.0) prior to immunohistochemistry staining.

This product is suitable for in-vitro studies under the RESEARCH USE ONLY [RUO] licence. This product must not be used as for diagnostic or other medical purposes.
St John's Laboratory Ltd, Knowledge Dock Business Centre, University Way, London, E16 2RD | Tel: 0208 223 3081