

Anti-CIRBP antibody (1-172) [S9MR] (STJ11103019)

STJ11103019

GENERAL INFORMATION

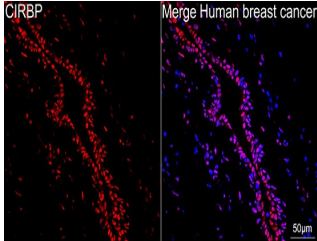
Product Type	Primary antibodies
Short Description	
Applications	WB/IHC-P/IF/ICC/ELISA
Host/Source	Rabbit
Reactivity	Human/Mouse/Rat

PRODUCT PROPERTIES

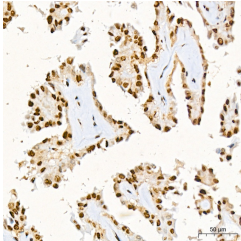
Clonality	Monoclonal
Clone ID	S9MR
Concentration	Lot specific
Conjugation	Unconjugated
Purification	Affinity purification
Dilution	WB:1:500-1:1000
Range	IHC-P:1:500-1:1000 IF/ICC:1:50-1:200 ELISA:Recommended starting concentration is 1 μ g/mL. Please optimize the concentration based on your specific assay requirements.
Formulation	PBS with 0.02% Sodium Azide, 0.05% BSA, 50% Glycerol, pH 7.3.
Isotype	IgG
Storage	Store at -20°C for up to 1 year from the date of receipt, and avoid repeat freeze-thaw cycles.
Instruction	

TARGET INFORMATION

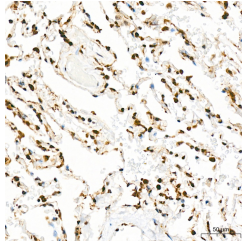
Gene ID	1153
Gene Symbol	CIRBP
Uniprot ID	CIRBP_HUMAN
Immunogen	
Immunogen Region	1-172
Specificity	Recombinant fusion protein containing a sequence corresponding to amino acids 1-172 of human CIRBP (Q14011).
Immunogen Sequence	MASDEGKLFVGGLSFDTNEQ SLEQVFSKYGQISEVVVKD RETQRSRGFGVTFENIDDA KDAMMAMNGKSVDGRQIRVD QAGKSSDNRSRGYRGGSAGG RGFFRGGRGRGRGFSRGGGD RGYGGRNFESRSGGYGGSRD YYSRSQSGGYSDRSSGGSY RDSYDSYATHNE



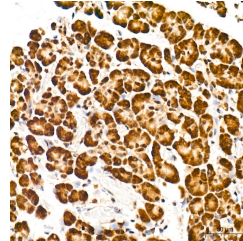
Confocal imaging of a paraffin-embedded human breast cancer tissue using a CIRBP Rabbit monoclonal antibody (STJ11103019, dilution 1:100) followed by a further incubation with Cy3 Goat Anti-Rabbit IgG (H+L) (dilution 1:500) (Red). DAPI was used for nuclear staining (Blue). Objective: 40x. Perform high pressure antigen retrieval with 0.01 M citrate buffer (pH 6.0) prior to IF staining.



Immunohistochemistry analysis of a CIRBP in paraffin-embedded human thyroid tissue using a CIRBP Rabbit monoclonal antibody (STJ11103019) at a dilution of 1:1000 (40x lens). High pressure antigen retrieval was performed with 0.01 M citrate buffer (pH 6.0) prior to immunohistochemistry staining.



Immunohistochemistry analysis of a CIRBP in paraffin-embedded human lung tissue using a CIRBP Rabbit monoclonal antibody (STJ11103019) at a dilution of 1:1000 (40x lens). High pressure antigen retrieval was performed with 0.01 M citrate buffer (pH 6.0) prior to immunohistochemistry staining.



Immunohistochemistry analysis of a CIRBP in paraffin-embedded human pancreas tissue using a CIRBP Rabbit monoclonal antibody (STJ11103019) at a dilution of 1:1000 (40x lens). High pressure antigen retrieval was performed with 0.01 M citrate buffer (pH 6.0) prior to immunohistochemistry staining.

This product is suitable for in-vitro studies under the RESEARCH USE ONLY [RUO] licence. This product must not be used as for diagnostic or other medical purposes.
St John's Laboratory Ltd, Knowledge Dock Business Centre, University Way, London, E16 2RD | Tel: 0208 223 3081