

## Anti-ATP1A2 antibody (1-100) [S9MR] (STJ11103009)

STJ11103009

### GENERAL INFORMATION

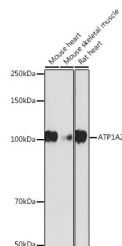
|                          |                    |
|--------------------------|--------------------|
| <b>Product Type</b>      | Primary antibodies |
| <b>Short Description</b> |                    |
| <b>Applications</b>      | WB/ELISA           |
| <b>Host/Source</b>       | Rabbit             |
| <b>Reactivity</b>        | Mouse/Rat          |

### PRODUCT PROPERTIES

|                       |                                                                                                                                                         |
|-----------------------|---------------------------------------------------------------------------------------------------------------------------------------------------------|
| <b>Clonality</b>      | Monoclonal                                                                                                                                              |
| <b>Clone ID</b>       | S9MR                                                                                                                                                    |
| <b>Concentration</b>  | Lot specific                                                                                                                                            |
| <b>Conjugation</b>    | Unconjugated                                                                                                                                            |
| <b>Purification</b>   | Affinity purification                                                                                                                                   |
| <b>Dilution Range</b> | WB:1:1000-1:2000<br>ELISA:Recommended starting concentration is 1 Mu g/mL. Please optimize the concentration based on your specific assay requirements. |
| <b>Formulation</b>    | PBS with 0.02% Sodium Azide, 0.05% BSA, 50% Glycerol, pH 7.3.                                                                                           |
| <b>Isotype</b>        | IgG                                                                                                                                                     |
| <b>Storage</b>        | Store at -20°C for up to 1 year from the date of receipt, and avoid repeat freeze-thaw cycles.                                                          |
| <b>Instruction</b>    |                                                                                                                                                         |

### TARGET INFORMATION

|                           |                                                                                                         |
|---------------------------|---------------------------------------------------------------------------------------------------------|
| <b>Gene ID</b>            | 477                                                                                                     |
| <b>Gene Symbol</b>        | ATP1A2                                                                                                  |
| <b>Uniprot ID</b>         | AT1A2_HUMAN                                                                                             |
| <b>Immunogen</b>          |                                                                                                         |
| <b>Immunogen Region</b>   | 1-100                                                                                                   |
| <b>Specificity</b>        | A synthetic peptide corresponding to a sequence within amino acids 1-100 of human ATP1A2 (P50993).      |
| <b>Immunogen Sequence</b> | MGRGAGREYSPAATTAENG GKKKQKEKELDELKKEVAMD DHKLSLDELGRKYQVDLSKG LTNQRAQDVLARDGPNALTP PPTTPEWVKFCRQLFGGFSI |



Western blot analysis of extracts of various cell lines, using ATP1A2 antibody (STJ11103009) at 1:1000 dilution. Secondary antibody: HRP Goat Anti-Rabbit IgG (H+L) (STJS000856) at 1:10000 dilution. Lysates/proteins: 25 Mu g per lane. Blocking buffer: 3% nonfat dry milk in TBST. Detection: ECL Basic Kit. Exposure time: 180s.

This product is suitable for in-vitro studies under the RESEARCH USE ONLY [RUO] licence. This product must not be used as for diagnostic or other medical purposes.  
St John's Laboratory Ltd, Knowledge Dock Business Centre, University Way, London, E16 2RD | Tel: 0208 223 3081