

Anti-CBR1 antibody (178-277) [S4MR] (STJ11102994)

STJ11102994

GENERAL INFORMATION

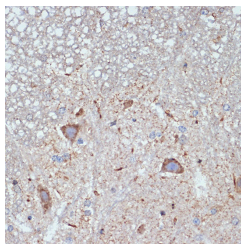
Product Type	Primary antibodies
Short Description	
Applications	WB/IHC-P/ELISA
Host/Source	Rabbit
Reactivity	Human/Mouse

PRODUCT PROPERTIES

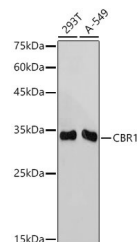
Clonality	Monoclonal
Clone ID	S4MR
Concentration	Lot specific
Conjugation	Unconjugated
Purification	Affinity purification
Dilution Range	WB:1:500-1:1000 IHC-P:1:50-1:200 ELISA:Recommended starting concentration is 1 Mu g/mL. Please optimize the concentration based on your specific assay requirements.
Formulation	PBS with 0.02% Sodium Azide, 0.05% BSA, 50% Glycerol, pH 7.3.
Isotype	IgG
Storage Instruction	Store at -20°C for up to 1 year from the date of receipt, and avoid repeat freeze-thaw cycles.

TARGET INFORMATION

Gene ID	873
Gene Symbol	CBR1
Uniprot ID	CBR1_HUMAN
Immunogen	
Immunogen Region	178-277
Specificity	A synthetic peptide corresponding to a sequence within amino acids 178-277 of human CBR1 (P16152).
Immunogen Sequence	DTKKGVHQKEGWPPSSAYGVT KIGVTVLSRIHARKLSEQRK GDKILLNACCPGWVRTDMAG PKATKSPEEGAETPVYLALL PPDAEGPHGQFVSEKRVEQW



Immunohistochemistry analysis of paraffin-embedded mouse spinal cord using CBR1 Rabbit monoclonal antibody (STJ11102994) at dilution of 1:100 (40x lens). Perform microwave antigen retrieval with 10 mM Tris/EDTA buffer pH 9.0 before commencing with immunohistochemistry staining protocol.



Western blot analysis of extracts of various cell lines, using CBR1 antibody (STJ11102994) at 1:1000 dilution. Secondary antibody: HRP Goat Anti-Rabbit IgG (H+L) (STJS000856) at 1:10000 dilution. Lysates/proteins: 25 Mu g per lane. Blocking buffer: 3% nonfat dry milk in TBST. Detection: ECL Basic Kit. Exposure time: 10s.

This product is suitable for in-vitro studies under the RESEARCH USE ONLY [RUO] licence. This product must not be used as for diagnostic or other medical purposes.
St John's Laboratory Ltd, Knowledge Dock Business Centre, University Way, London, E16 2RD | Tel: 0208 223 3081