

Anti-XPB/ERCC2 antibody (600-700) [S3MR] (STJ11102973)
STJ11102973

GENERAL INFORMATION

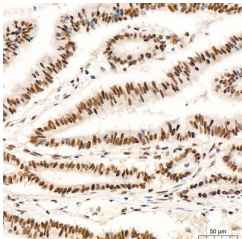
Product Type	Primary antibodies
Short Description	
Applications	WB/IHC-P/ELISA
Host/Source	Rabbit
Reactivity	Human/Mouse/Rat

PRODUCT PROPERTIES

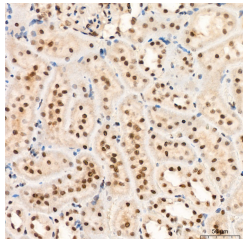
Clonality	Monoclonal
Clone ID	S3MR
Concentration	Lot specific
Conjugation	Unconjugated
Purification	Affinity purification
Dilution Range	WB:1:500-1:1000 IHC-P:1:50-1:200 ELISA:Recommended starting concentration is 1 µg/mL. Please optimize the concentration based on your specific assay requirements.
Formulation	PBS with 0.02% Sodium Azide, 0.05% BSA, 50% Glycerol, pH 7.3.
Isotype	IgG
Storage Instruction	Store at -20°C for up to 1 year from the date of receipt, and avoid repeat freeze-thaw cycles.

TARGET INFORMATION

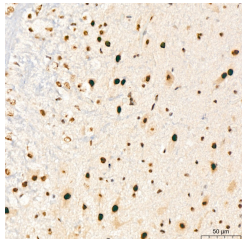
Gene ID	2068
Gene Symbol	ERCC2
Uniprot ID	ERCC2_HUMAN
Immunogen	
Immunogen Region	600-700
Specificity	A synthetic peptide corresponding to a sequence within amino acids 600-700 of human XPB/ERCC2 (P18074).
Immunogen Sequence	ARGKVSEGIDFVHHYGRAVI MFGVPYVYTSRILKARLEY LRDQFQIRENDFLTDFAMRH AAQCVGRAIRGKTDYGLMVF ADKRFARGDKRGKLPRIQEH



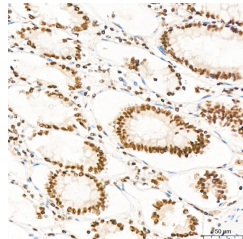
Immunohistochemistry analysis of XPB/ERCC2 in paraffin-embedded human colon carcinoma tissue using XPB/ERCC2 Rabbit monoclonal antibody (STJ11102973) at a dilution of 1:200 (40x lens). High pressure antigen retrieval was performed with 0.01 M Tris-EDTA buffer (pH 9.0) prior to immunohistochemistry staining.



Immunohistochemistry analysis of XPB/ERCC2 in paraffin-embedded rat kidney tissue using XPB/ERCC2 Rabbit monoclonal antibody (STJ11102973) at a dilution of 1:200 (40x lens). High pressure antigen retrieval was performed with 0.01 M Tris-EDTA buffer (pH 9.0) prior to immunohistochemistry staining.



Immunohistochemistry analysis of XPB/ERCC2 in paraffin-embedded mouse brain tissue using XPB/ERCC2 Rabbit monoclonal antibody (STJ11102973) at a dilution of 1:200 (40x lens). High pressure antigen retrieval was performed with 0.01 M Tris-EDTA buffer (pH 9.0) prior to immunohistochemistry staining.



Immunohistochemistry analysis of XPB/ERCC2 in paraffin-embedded human colon tissue using XPB/ERCC2 Rabbit monoclonal antibody (STJ11102973) at a dilution of 1:200 (40x lens). High pressure antigen retrieval was performed with 0.01 M Tris-EDTA buffer (pH 9.0) prior to immunohistochemistry staining.

This product is suitable for in-vitro studies under the RESEARCH USE ONLY [RUO] licence. This product must not be used as for diagnostic or other medical purposes.
St John's Laboratory Ltd, Knowledge Dock Business Centre, University Way, London, E16 2RD | Tel: 0208 223 3081