

Anti-CCDC50 antibody (10-147) (STJ11102933)

STJ11102933

GENERAL INFORMATION

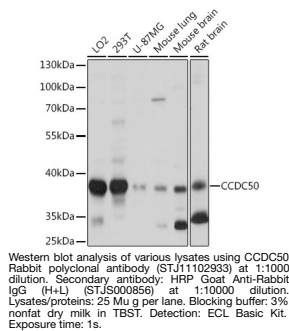
Product Type	Primary antibodies
Short Description	
Applications	WB/ELISA
Host/Source	Rabbit
Reactivity	Human/Mouse/Rat

PRODUCT PROPERTIES

Clonality	Polyclonal
Clone ID	
Concentration	Lot specific
Conjugation	Unconjugated
Purification	Affinity purification
Dilution	WB:1:500-1:2000
Range	ELISA:Recommended starting concentration is 1 Mu g/mL. Please optimize the concentration based on your specific assay requirements.
Formulation	PBS with 0.01% Thimerosal, 50% Glycerol, pH 7.3.
Isotype	IgG
Storage	Store at -20°C for up to 1 year from the date of receipt, and avoid repeat freeze-thaw cycles.
Instruction	

TARGET INFORMATION

Gene ID	152137
Gene Symbol	CCDC50
Uniprot ID	CCD50_HUMAN
Immunogen	
Immunogen Region	10-147
Specificity	Recombinant fusion protein containing a sequence corresponding to amino acids 10-147 of human CCDC50 (NP_777568.1). KLPGVKEVCRDFAVLEDHTL AHSLQEQEIEHHLASNVQRN RLVQHDLOQVAKLQEEDLKA QAQLQKRYKDLEQQDCEIAQ
Immunogen Sequence	EIQEKLAIEAERRRIQEKD EDIARLLQEKELQEEKRKK HFPEFPATRAYADSYYYE



This product is suitable for in-vitro studies under the RESEARCH USE ONLY [RUO] licence. This product must not be used as for diagnostic or other medical purposes.
St John's Laboratory Ltd, Knowledge Dock Business Centre, University Way, London, E16 2RD | Tel: 0208 223 3081