

**Anti-COG1 antibody (835-935) (STJ11102919)**  
STJ11102919

**GENERAL INFORMATION**

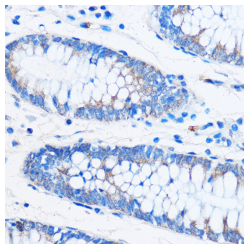
<b>Product Type</b>	Primary antibodies
<b>Short Description</b>	
<b>Applications</b>	WB/IHC-P/ELISA
<b>Host/Source</b>	Rabbit
<b>Reactivity</b>	Human/Mouse/Rat

**PRODUCT PROPERTIES**

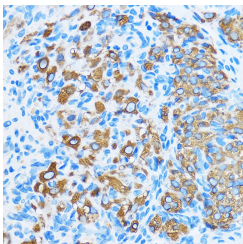
<b>Clonality</b>	Polyclonal
<b>Clone ID</b>	
<b>Concentration</b>	Lot specific
<b>Conjugation</b>	Unconjugated
<b>Purification</b>	Affinity purification
<b>Dilution Range</b>	WB:1:500-1:2000 IHC-P:1:50-1:200 ELISA:Recommended starting concentration is 1 µg/mL. Please optimize the concentration based on your specific assay requirements.
<b>Formulation</b>	PBS with 0.01% Thimerosal, 50% Glycerol, pH 7.3.
<b>Isotype</b>	IgG
<b>Storage Instruction</b>	Store at -20°C for up to 1 year from the date of receipt, and avoid repeat freeze-thaw cycles.

**TARGET INFORMATION**

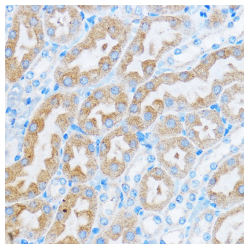
<b>Gene ID</b>	9382
<b>Gene Symbol</b>	COG1
<b>Uniprot ID</b>	COG1_HUMAN
<b>Immunogen</b>	
<b>Immunogen Region</b>	835-935
<b>Specificity</b>	A synthetic peptide corresponding to a sequence within amino acids 835-935 of human COG1 (NP_061184.1).
<b>Immunogen Sequence</b>	DSRIEKVTDHLEALIDPFDL DVFTPLNSNLHRLVQRTSV LFGLVTGTENQLAPRSSTFN SQEPHNILPLASSQIRFGLL PLSMTSTRKAKSTRNIETKA Q



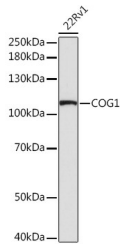
Immunohistochemistry analysis of COG1 in paraffin-embedded Human colon using COG1 Rabbit polyclonal antibody (STJ11102919) at dilution of 1:50 (40x lens). Perform microwave antigen retrieval with 10 mM PBS buffer pH 7.2 before commencing with immunohistochemistry staining protocol.



Immunohistochemistry analysis of COG1 in paraffin-embedded Rat ovary using COG1 Rabbit polyclonal antibody (STJ11102919) at dilution of 1:50 (40x lens). Perform microwave antigen retrieval with 10 mM PBS buffer pH 7.2 before commencing with immunohistochemistry staining protocol.



Immunohistochemistry analysis of COG1 in paraffin-embedded Mouse kidney using COG1 Rabbit polyclonal antibody (STJ11102919) at dilution of 1:50 (40x lens). Perform microwave antigen retrieval with 10 mM PBS buffer pH 7.2 before commencing with immunohistochemistry staining protocol.



Western blot analysis of lysates from 22Rv1 cells, using COG1 Rabbit polyclonal antibody (STJ11102919) at 1:1000 dilution. Secondary antibody: HRP Goat Anti-Rabbit IgG (H+L) (STJS000656) at 1:10000 dilution. Lysates/proteins: 25 µg per lane. Blocking buffer: 3% nonfat dry milk in TBST. Detection: ECL Basic Kit. Exposure time: 90s.