

Anti-PDE12 antibody (17-300) (STJ11102898)

STJ11102898

GENERAL INFORMATION

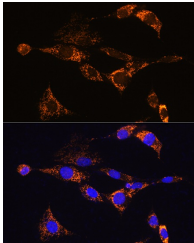
Product Type	Primary antibodies
Short Description	
Applications	WB/IF/ICC/ELISA
Host/Source	Rabbit
Reactivity	Mouse/Rat

PRODUCT PROPERTIES

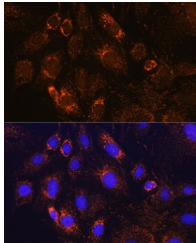
Clonality	Polyclonal
Clone ID	
Concentration	Lot specific
Conjugation	Unconjugated
Purification	Affinity purification
Dilution	WB: 1:500-1:2000
Range	IF/CC: 1:50-1:200
	ELISA: Recommended starting concentration is 1 µg/mL. Please optimize the concentration based on your specific assay requirements.
Formulation	PBS with 0.01% Thimerosal, 50% Glycerol, pH 7.3.
Isotype	IgG
Storage	Store at -20°C for up to 1 year from the date of receipt, and avoid repeat freeze-thaw cycles.
Instruction	

TARGET INFORMATION

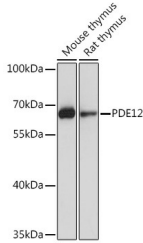
Gene ID	201626
Gene Symbol	PDE12
Uniprot ID	PDE12_HUMAN
Immunogen	
Immunogen Region	17-300
Specificity	Recombinant fusion protein containing a sequence corresponding to amino acids 17-300 of human PDE12 (NP_001309106.1).
Immunogen Sequence	AVEKLSRAEAGSQTAAAGAME RAVVRCVPSEPKLSLSFALA DGSHKNMQRDQSEPLGRVLS RIATNALKGHAKAAAAKKSR KSRPNASGGAACSGPGPEPA VFCEPVVKLYYREEEVAEDV LNVDAWQDQAVLQIGDVKYK VERNPPAFTELQLPRYIMAG FVCPKLSLEFGDPASSLFR WYKEAKPGAAEPEVGPSSL SPSSPSSSWTETDVEERVYT PSNADIGLRLKLHCTPGDG



Immunofluorescence analysis of NIH/3T3 cells using PDE12 Rabbit polyclonal antibody (STJ11102898) at dilution of 1:100. Secondary antibody: Cy3 Goat Anti-Rabbit IgG (H+L) at 1:500 dilution. Blue: DAPI for nuclear staining.



Immunofluorescence analysis of C6 cells using PDE12 Rabbit polyclonal antibody (STJ11102898) at dilution of 1:100. Secondary antibody: Cy3 Goat Anti-Rabbit IgG (H+L) at 1:500 dilution. Blue: DAPI for nuclear staining.



Western blot analysis of various lysates using PDE12 Rabbit polyclonal antibody (STJ11102898) at 1:1000 dilution. Secondary antibody: HRP Goat Anti-Rabbit IgG (H+L) (STJ5000856) at 1:10000 dilution. Lysates/proteins: 25 µg per lane. Blocking buffer: 3% nonfat dry milk in TBST. Detection: ECL Basic Kit. Exposure time: 10s.

This product is suitable for in-vitro studies under the RESEARCH USE ONLY [RUO] licence. This product must not be used as for diagnostic or other medical purposes.
St John's Laboratory Ltd, Knowledge Dock Business Centre, University Way, London, E16 2RD | Tel: 0208 223 3081