

Anti-NeuN antibody (1-312) (STJ11102896)

STJ11102896

GENERAL INFORMATION

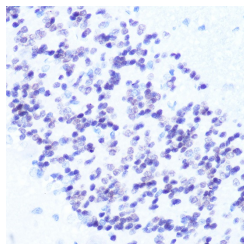
Product Type	Primary antibodies
Short Description	
Applications	WB/IHC-P/ELISA
Host/Source	Rabbit
Reactivity	Mouse/Rat

PRODUCT PROPERTIES

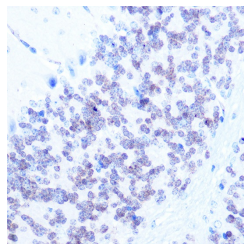
Clonality	Polyclonal
Clone ID	
Concentration	Lot specific
Conjugation	Unconjugated
Purification	Affinity purification
Dilution Range	WB:1:500-1:1000 IHC-P:1:50-1:200 ELISA:Recommended starting concentration is 1 µg/mL. Please optimize the concentration based on your specific assay requirements.
Formulation	PBS with 0.01% Thimerosal, 50% Glycerol, pH 7.3.
Isotype	IgG
Storage	Store at -20°C for up to 1 year from the date of receipt, and avoid repeat freeze-thaw cycles.
Instruction	

TARGET INFORMATION

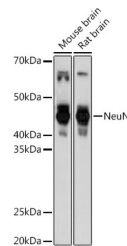
Gene ID	146713
Gene Symbol	RBFOX3
Uniprot ID	RFOX3_HUMAN
Immunogen	
Immunogen Region	1-312
Specificity	Recombinant fusion protein containing a sequence corresponding to amino acids 1-100 of human NeuN (NP_001076044.1).
Immunogen Sequence	MAQPYPPAQYPPPPQNGIPA EYAPPPHPTQDYSQGTPVP TEHGMTLYTPAQTHPEQPGS EASTQPIAGTQTVPTDEAA QTDSQPLHPSDPTEKQPKR



Immunohistochemistry analysis of NeuN in paraffin-embedded Rat brain using NeuN Rabbit polyclonal antibody (STJ11102896) at dilution of 1:100 (40x lens). Perform microwave antigen retrieval with 10 mM Tris/EDTA buffer pH 9.0 before commencing with immunohistochemistry staining protocol.



Immunohistochemistry analysis of NeuN in paraffin-embedded Mouse brain using NeuN Rabbit polyclonal antibody (STJ11102896) at dilution of 1:100 (40x lens). Perform microwave antigen retrieval with 10 mM Tris/EDTA buffer pH 9.0 before commencing with immunohistochemistry staining protocol.



Western blot analysis of various lysates using NeuN Rabbit polyclonal antibody (STJ11102896) at 1:1000 dilution. Secondary antibody: HRP Goat Anti-Rabbit IgG (H+L) (STJ5000856) at 1:10000 dilution. Lysates/proteins: 25 µg per lane. Blocking buffer: 3% nonfat dry milk in TBST. Detection: ECL Basic Kit. Exposure time: 90s.

This product is suitable for in-vitro studies under the RESEARCH USE ONLY [RUO] licence. This product must not be used as for diagnostic or other medical purposes.
St John's Laboratory Ltd, Knowledge Dock Business Centre, University Way, London, E16 2RD | Tel: 0208 223 3081