

Anti-EDEM2 antibody (399-578) (STJ11102871)

STJ11102871

GENERAL INFORMATION

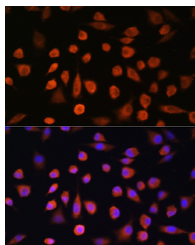
Product Type	Primary antibodies
Short Description	
Applications	WB/IF/ICC/ELISA
Host/Source	Rabbit
Reactivity	Human/Mouse

PRODUCT PROPERTIES

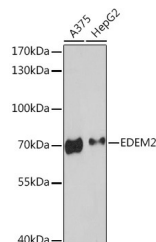
Clonality	Polyclonal
Clone ID	
Concentration	Lot specific
Conjugation	Unconjugated
Purification	Affinity purification
Dilution	WB:1:500-1:2000
Range	IF/CC:1:50-1:200
	ELISA:Recommended starting concentration is 1 Mu g/mL. Please optimize the concentration based on your specific assay requirements.
Formulation	PBS with 0.01% Thimerosal, 50% Glycerol, pH 7.3.
Isotype	IgG
Storage Instruction	Store at -20°C for up to 1 year from the date of receipt, and avoid repeat freeze-thaw cycles.

TARGET INFORMATION

Gene ID	55741
Gene Symbol	EDEM2
Uniprot ID	EDEM2_HUMAN
Immunogen	
Immunogen Region	399-578
Specificity	Recombinant fusion protein containing a sequence corresponding to amino acids 399-578 of human EDEM2 (NP_060687.2).
Immunogen Sequence	SIEKISKVECGFATIKDLRD HKLDNRMESFFLAETVKYLY LLDPTNFIHNNGSTFDAVI TPYGECILGAGGYIFNTEAH PIDPAALHCCQRLKEEQWEV EDLMREFYSLKRSRSKFQKN TVSSGPWEPPARPGTLFSPE NHDQARERKPAKQKVPLLS PSQPFTSKLALLGQVFLDSS



Immunofluorescence analysis of L929 cells using EDEM2 Rabbit polyclonal antibody (STJ11102871) at dilution of 1:100. Secondary antibody: Cy3 Goat Anti-Rabbit IgG (H+L) at 1:500 dilution. Blue: DAPI for nuclear staining.



Western blot analysis of various lysates using EDEM2 Rabbit polyclonal antibody (STJ11102871) at 1:3000 dilution. Secondary antibody: HRP Goat Anti-Rabbit IgG (H+L) (STJ5000856) at 1:10000 dilution. Lysates/proteins: 25 Mu g per lane. Blocking buffer: 3% nonfat dry milk in TBST. Detection: ECL Enhanced Kit. Exposure time: 90s.

This product is suitable for in-vitro studies under the RESEARCH USE ONLY [RUO] licence. This product must not be used as for diagnostic or other medical purposes.

St John's Laboratory Ltd, Knowledge Dock Business Centre, University Way, London, E16 2RD | Tel: 0208 223 3081