

Anti-DKK3 antibody (22-200) (STJ11102858)
STJ11102858

GENERAL INFORMATION

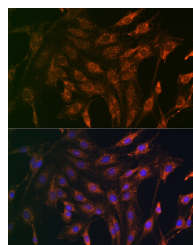
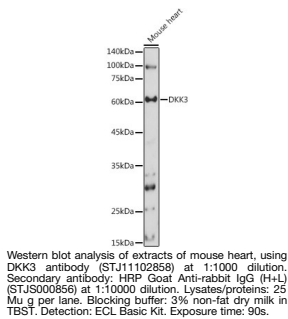
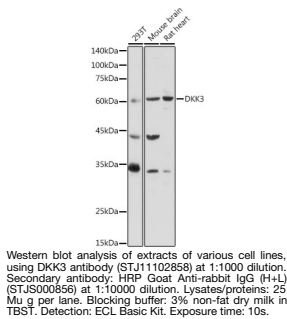
Product Type	Primary antibodies
Short Description	
Applications	WB/IF/ICC/ELISA
Host/Source	Rabbit
Reactivity	Human/Mouse/Rat

PRODUCT PROPERTIES

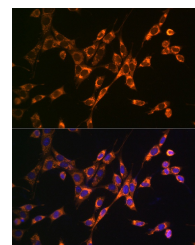
Clonality	Polyclonal
Clone ID	
Concentration	Lot specific
Conjugation	Unconjugated
Purification	Affinity purification
Dilution	WB:1:500-1:1000
Range	IF/CC:1:50-1:100 ELISA:Recommended starting concentration is 1 Mu g/mL. Please optimize the concentration based on your specific assay requirements.
Formulation	PBS with 0.01% Thimerosal, 50% Glycerol, pH 7.3.
Isotype	IgG
Storage Instruction	Store at -20°C for up to 1 year from the date of receipt, and avoid repeat freeze-thaw cycles.

TARGET INFORMATION

Gene ID	27122
Gene Symbol	DKK3
Uniprot ID	DKK3_HUMAN
Immunogen	
Immunogen Region	22-200
Specificity	Recombinant fusion protein containing a sequence corresponding to amino acids 22-200 of human DKK3 (NP_056965.3).
Immunogen Sequence	APAPTATSAPVKPGPALSYP QEEATLNEMFREVEELMEDT QHKLRSVEEMEAEAAAAKA SSEVNLANLPPSYHNETNTD TKVGNNTIHVHREIHKITNN QTGQVMVFSETVITSGVDEEG RRSHECIIDEDCGPSMYCQF ASFYQTCQPCRGRMLCTRD SECCGDLQVCWGHCTKMAT



Immunofluorescence analysis of C6 cells using DKK3 rabbit polyclonal antibody (STJ11102858) at dilution of 1:100 (40x lens). Blue: DAPI for nuclear staining.



Immunofluorescence analysis of NIH/3T3 cells using DKK3 rabbit polyclonal antibody (STJ11102858) at dilution of 1:100 (40x lens). Blue: DAPI for nuclear staining.

This product is suitable for in-vitro studies under the RESEARCH USE ONLY [RUO] licence. This product must not be used as for diagnostic or other medical purposes.
St John's Laboratory Ltd, Knowledge Dock Business Centre, University Way, London, E16 2RD | Tel: 0208 223 3081