

Anti-SIRT3 antibody (299-399) (STJ11102849)

STJ11102849

GENERAL INFORMATION

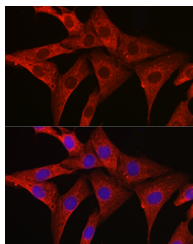
Product Type	Primary antibodies
Short Description	
Applications	WB/IHC-P/IF/ICC/ELISA
Host/Source	Rabbit
Reactivity	Human/Mouse/Rat

PRODUCT PROPERTIES

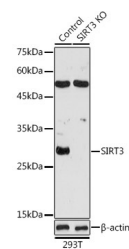
Clonality	Polyclonal
Clone ID	
Concentration	Lot specific
Conjugation	Unconjugated
Purification	Affinity purification
Dilution Range	WB:1:500-1:1000 IHC-P:1:50-1:200 IF/ICC:1:50-1:200 ELISA:Recommended starting concentration is 1 µg/mL. Please optimize the concentration based on your specific assay requirements.
Formulation	PBS with 0.09% Sodium Azide, 50% Glycerol, pH 7.3.
Isotype	IgG
Storage Instruction	Store at -20°C for up to 1 year from the date of receipt, and avoid repeat freeze-thaw cycles.

TARGET INFORMATION

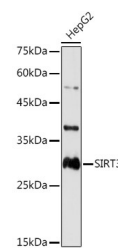
Gene ID	23410
Gene Symbol	SIRT3
Uniprot ID	SIR3_HUMAN
Immunogen	
Immunogen Region	299-399
Specificity	A synthetic peptide corresponding to a sequence within amino acids 299-399 of human SIRT3 (NP_036371.1).
Immunogen Sequence	PQRFLLHVDFPMADLLIL GTSLEVPFASLTEAVRSSV PRLINRDLVGPLAWHPRSR DVAQLGDVHGVESLVELLG WTEEMRDLVQRETGKLDGPD K



Immunofluorescence analysis of NIH/3T3 cells using [KO Validated] SIRT3 Rabbit polyclonal antibody (STJ11102849) at dilution of 1:100 (40x lens). Blue: DAPI for nuclear staining.



Western blot analysis of extracts from normal (control) and SIRT3 knockout (KO) 293T cells, using SIRT3 antibody (STJ11102849) at 1:1000 dilution. Secondary antibody: HRP Goat Anti-Rabbit IgG (H+L) (STJS000856) at 1:10000 dilution. Lysates/proteins: 25 µg per lane. Blocking buffer: 3% nonfat dry milk in TBST. Detection: ECL Basic Kit. Exposure time: 10s.



Western blot analysis of extracts of HepG2 cells, using SIRT3 antibody (STJ11102849) at 1:1000 dilution. Secondary antibody: HRP Goat Anti-Rabbit IgG (H+L) (STJS000856) at 1:10000 dilution. Lysates/proteins: 25 µg per lane. Blocking buffer: 3% nonfat dry milk in TBST. Detection: ECL Basic Kit. Exposure time: 10s.

This product is suitable for in-vitro studies under the RESEARCH USE ONLY [RUO] licence. This product must not be used as for diagnostic or other medical purposes.
St John's Laboratory Ltd, Knowledge Dock Business Centre, University Way, London, E16 2RD | Tel: 0208 223 3081