

Anti-WIPF1 antibody (400-500) (STJ11102826)

STJ11102826

GENERAL INFORMATION

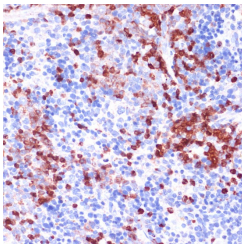
Product Type	Primary antibodies
Short Description	
Applications	WB/IHC-P/ELISA
Host/Source	Rabbit
Reactivity	Human/Mouse/Rat

PRODUCT PROPERTIES

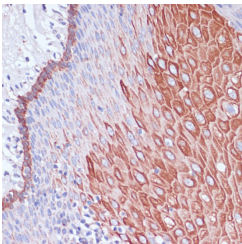
Clonality	Polyclonal
Clone ID	
Concentration	Lot specific
Conjugation	Unconjugated
Purification	Affinity purification
Dilution Range	WB:1:500-1:2000 IHC-P:1:100-1:200 ELISA:Recommended starting concentration is 1 µg/mL. Please optimize the concentration based on your specific assay requirements.
Formulation	PBS with 0.01% Thimerosal, 50% Glycerol, pH 7.3.
Isotype	IgG
Storage	Store at -20°C for up to 1 year from the date of receipt, and avoid repeat freeze-thaw cycles.
Instruction	

TARGET INFORMATION

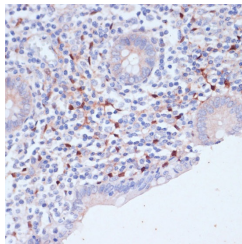
Gene ID	7456
Gene Symbol	WIPF1
Uniprot ID	WIPF1_HUMAN
Immunogen	
Immunogen Region	400-500
Specificity	A synthetic peptide corresponding to a sequence within amino acids 400-500 of human WIPF1 (NP_001070737.1).
Immunogen Sequence	QLPSRSGVDSPRSGRPPLP PDRPSAGAPPPPPSTSI RN GFQDSPCEDEWESRFYFHP I SDLPPEPYVQTTKSYPSKL ARNESRSGSNRRERGAAPLP P



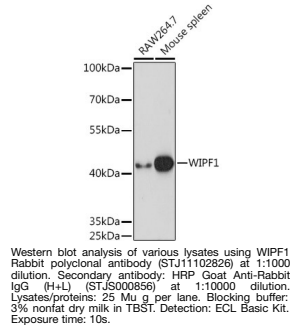
Immunohistochemistry analysis of WIPF1 in paraffin-embedded mouse spleen using WIPF1 Rabbit polyclonal antibody (STJ11102826) at dilution of 1:100 (40x lens). Perform microwave antigen retrieval with 10 mM PBS buffer pH 7.2 before commencing with immunohistochemistry staining protocol.



Immunohistochemistry analysis of WIPF1 in paraffin-embedded human esophageal using WIPF1 Rabbit polyclonal antibody (STJ11102826) at dilution of 1:100 (40x lens). Perform microwave antigen retrieval with 10 mM PBS buffer pH 7.2 before commencing with immunohistochemistry staining protocol.



Immunohistochemistry analysis of WIPF1 in paraffin-embedded human appendix using WIPF1 Rabbit polyclonal antibody (STJ11102826) at dilution of 1:100 (40x lens). Perform microwave antigen retrieval with 10 mM PBS buffer pH 7.2 before commencing with immunohistochemistry staining protocol.



This product is suitable for in-vitro studies under the RESEARCH USE ONLY [RUO] licence. This product must not be used as for diagnostic or other medical purposes.
St John's Laboratory Ltd, Knowledge Dock Business Centre, University Way, London, E16 2RD | Tel: 0208 223 3081