

Anti-CSK antibody (188-450) (STJ11102784)
STJ11102784

GENERAL INFORMATION

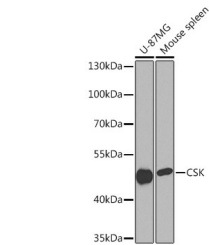
Product Type	Primary antibodies
Short Description	
Applications	WB/IHC-P/IF/ICC/ELISA
Host/Source	Rabbit
Reactivity	Human/Mouse/Rat

PRODUCT PROPERTIES

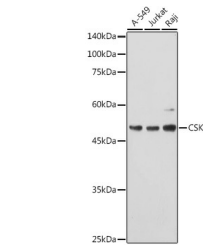
Clonality	Polyclonal
Clone ID	
Concentration	Lot specific
Conjugation	Unconjugated
Purification	Affinity purification
Dilution	WB:1:500-1:1000
Range	IHC-P:1:50-1:200 IF/ICC:1:50-1:200 ELISA:Recommended starting concentration is 1 μ g/mL. Please optimize the concentration based on your specific assay requirements.
Formulation	PBS with 0.09% Sodium Azide, 50% Glycerol, pH 7.3.
Isotype	IgG
Storage	Store at -20°C for up to 1 year from the date of receipt, and avoid repeat freeze-thaw cycles.
Instruction	

TARGET INFORMATION

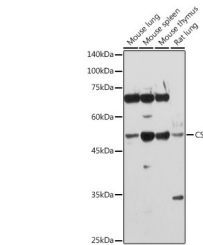
Gene ID	1445
Gene Symbol	CSK
Uniprot ID	CSK_HUMAN
Immunogen	
Immunogen Region	188-450
Specificity	Recombinant fusion protein containing a sequence corresponding to amino acids 188-450 of human CSK (NP_004374.1).
Immunogen Sequence	WALNMKELKLLQTIGKGEFG DVMLGDYRGNKVAVKCIKND ATAQAFLAEASVMTQLRHSN LVQLLGVIVEEKGGLYIVTE YMAKGSLVDYLRSGRSVLG GDCLLKFSLDVCEAMEYLEG NNFVHRDLAARNVLVSEDNV AKVSDFGLTKEASSTQDTGK LPVKWTAPEALREKKFSTKS DVWSFGILLWEIYSFGRVPY PRIPLKDVPRVEKGKYMADA PDGCPPAVYEVMMKNCWHL



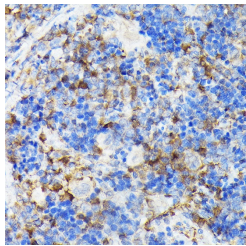
Western blot analysis of extracts of various cell lines, using CSK rabbit polyclonal antibody (STJ11102784) at 1:1000 dilution. Secondary antibody: HRP Goat Anti-rabbit IgG (H+L) (STJS000856) at 1:10000 dilution. Lysates/proteins: 25 μ g per lane. Blocking buffer: 3% non-fat dry milk in TBST. Detection: ECL Basic Kit. Exposure time: 90s.



Western blot analysis of extracts of various cell lines, using CSK antibody (STJ11102784) at 1:1000 dilution. Secondary antibody: HRP Goat Anti-rabbit IgG (H+L) (STJS000856) at 1:10000 dilution. Lysates/proteins: 25 μ g per lane. Blocking buffer: 3% non-fat dry milk in TBST. Detection: ECL Basic Kit. Exposure time: 60s.



Western blot analysis of extracts of various cell lines, using CSK antibody (STJ11102784) at 1:1000 dilution. Secondary antibody: HRP Goat Anti-rabbit IgG (H+L) (STJS000856) at 1:10000 dilution. Lysates/proteins: 25 μ g per lane. Blocking buffer: 3% non-fat dry milk in TBST. Detection: ECL Basic Kit. Exposure time: 90s.



Immunohistochemistry analysis of paraffin-embedded rat spleen using CSK rabbit polyclonal antibody (STJ11102784) at dilution of 1:100 (40x lens). Perform high pressure antigen retrieval with 10 mM citrate buffer pH 6.0 before commencing with immunohistochemistry staining protocol.

This product is suitable for in-vitro studies under the RESEARCH USE ONLY [RUO] licence. This product must not be used as for diagnostic or other medical purposes.
St John's Laboratory Ltd, Knowledge Dock Business Centre, University Way, London, E16 2RD | Tel: 0208 223 3081