

## Anti-CALCA antibody (26-128) (STJ11102780)

STJ11102780

### GENERAL INFORMATION

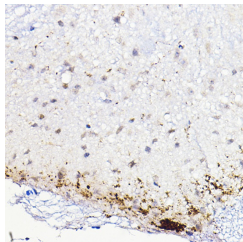
<b>Product Type</b>	Primary antibodies
<b>Short Description</b>	
<b>Applications</b>	IHC-P/ELISA
<b>Host/Source</b>	Rabbit
<b>Reactivity</b>	Mouse

### PRODUCT PROPERTIES

<b>Clonality</b>	Polyclonal
<b>Clone ID</b>	
<b>Concentration</b>	Lot specific
<b>Conjugation</b>	Unconjugated
<b>Purification</b>	Affinity purification
<b>Dilution Range</b>	IHC-P:1:50-1:200 ELISA:Recommended starting concentration is 1 Mu g/mL. Please optimize the concentration based on your specific assay requirements.
<b>Formulation</b>	PBS with 0.01% Thimerosal, 50% Glycerol, pH 7.3.
<b>Isotype</b>	IgG
<b>Storage</b>	Store at -20°C for up to 1 year from the date of receipt, and avoid repeat freeze-thaw cycles.
<b>Instruction</b>	

### TARGET INFORMATION

<b>Gene ID</b>	796
<b>Gene Symbol</b>	CALCA
<b>Uniprot ID</b>	CALCA_HUMAN
<b>Immunogen</b>	
<b>Immunogen Region</b>	26-128
<b>Specificity</b>	Recombinant fusion protein containing a sequence corresponding to amino acids 26-128 of CALCA (NP_001029125.1).
<b>Immunogen Sequence</b>	APFRSALESSPADPATLSED EARLLLAALVQDYVQMKASE LEQEQEREGRRIIAQKRACD TATCVTHRLAGLLSRSGGVV KNNFVPTNVGSKAFGRRRRD LQA



Immunohistochemistry analysis of CALCA in paraffin-embedded mouse spinal cord using CALCA Rabbit polyclonal antibody (STJ11102780) at dilution of 1:100 (40x lens). Perform high pressure antigen retrieval with 10 mM citrate buffer pH 6.0 before commencing with immunohistochemistry staining protocol.