

**Anti-Involucrin antibody (100-200) [S2MR] (STJ11102752)**  
STJ11102752

**GENERAL INFORMATION**

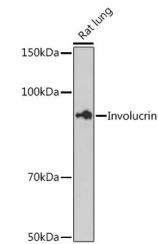
<b>Product Type</b>	Primary antibodies
<b>Short Description</b>	
<b>Applications</b>	WB/IHC-P/ELISA
<b>Host/Source</b>	Rabbit
<b>Reactivity</b>	Human/Mouse/Rat

**PRODUCT PROPERTIES**

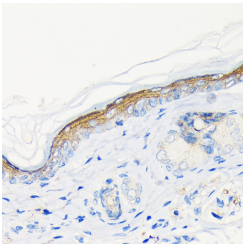
<b>Clonality</b>	Monoclonal
<b>Clone ID</b>	S2MR
<b>Concentration</b>	Lot specific
<b>Conjugation</b>	Unconjugated
<b>Purification</b>	Affinity purification
<b>Dilution Range</b>	WB:1:500-1:1000 IHC-P:1:200-1:2000 ELISA:Recommended starting concentration is 1 Mu g/mL. Please optimize the concentration based on your specific assay requirements.
<b>Formulation</b>	PBS with 0.02% Sodium Azide, 0.05% BSA, 50% Glycerol, pH 7.3.
<b>Isotype</b>	IgG
<b>Storage</b>	Store at -20°C for up to 1 year from the date of receipt, and avoid repeat freeze-thaw cycles.
<b>Instruction</b>	

**TARGET INFORMATION**

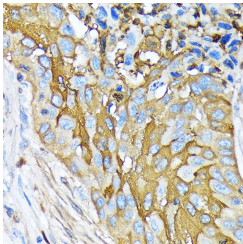
<b>Gene ID</b>	3713
<b>Gene Symbol</b>	IVL
<b>Uniprot ID</b>	INVO_HUMAN
<b>Immunogen</b>	
<b>Immunogen Region</b>	100-200
<b>Specificity</b>	A synthetic peptide corresponding to a sequence within amino acids 100-200 of human Involucrin (P07476).
<b>Immunogen Sequence</b>	KAENPEQQLKQEKTRDQQL NKQLEEEKLLDQQLDQELV KRDEQLGMKKEQLLELPEQQ EGHLEKHLQEQEGQLKHPEQQ EGQLELPEQQEQGQLLELPEQQ E



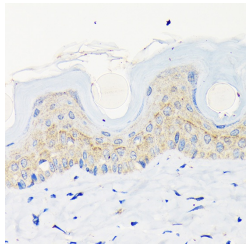
Western blot analysis of extracts of Rat lung, using Involucrin antibody (STJ11102752) at 1:500 dilution. Secondary antibody: HRP Goat Anti-rabbit IgG (H+L) (STJS000856) at 1:10000 dilution. Lysates/proteins: 25 Mu g per lane. Blocking buffer: 3% non-fat dry milk in TBST. Detection: ECL Basic Kit. Exposure time: 180s.



Immunohistochemistry analysis of paraffin-embedded rat skin using Involucrin rabbit monoclonal antibody (STJ11102752) at dilution of 1:100 (40x lens). Perform microwave antigen retrieval with 10 mM Tris/EDTA buffer pH 9.0 before commencing with immunohistochemistry staining protocol.



Immunohistochemistry analysis of paraffin-embedded human lung squamous carcinoma tissue using Involucrin rabbit monoclonal antibody (STJ11102752) at dilution of 1:100 (40x lens). Perform microwave antigen retrieval with 10 mM Tris/EDTA buffer pH 9.0 before commencing with immunohistochemistry staining protocol.



Immunohistochemistry analysis of paraffin-embedded mouse skin using Involucrin rabbit monoclonal antibody (STJ11102752) at dilution of 1:100 (40x lens). Perform microwave antigen retrieval with 10 mM Tris/EDTA buffer pH 9.0 before commencing with immunohistochemistry staining protocol.