

Anti-CD90/Thy1 antibody (1-100) [S7MR] (STJ11102747)

GENERAL INFORMATION

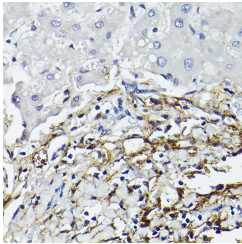
| | |
|-------------------|--------------------|
| Product Type | Primary antibodies |
| Short Description | |
| Applications | WB/IHC-P/ELISA |
| Host/Source | Rabbit |
| Reactivity | Human/Rat |

PRODUCT PROPERTIES

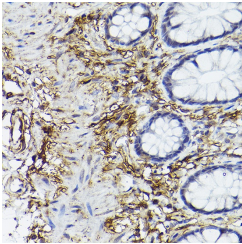
| | |
|---------------------|---|
| Clonality | Monoclonal |
| Clone ID | S7MR |
| Concentration | Lot specific |
| Conjugation | Unconjugated |
| Purification | Affinity purification |
| Dilution Range | WB:1:1000-1:4000 IHC-P:1:200-1:1000 ELISA:Recommended starting concentration is 1 µg/mL. Please optimize the concentration based on your specific assay requirements. |
| Formulation | PBS with 0.02% Sodium Azide, 0.05% BSA, 50% Glycerol, pH 7.3. |
| Isotype | IgG |
| Storage Instruction | Store at -20°C for up to 1 year from the date of receipt, and avoid repeat freeze-thaw cycles. |

TARGET INFORMATION

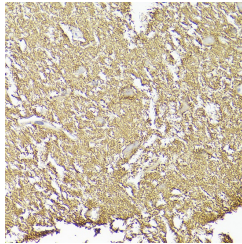
| | |
|--------------------|---|
| Gene ID | 7070 |
| Gene Symbol | THY1 |
| Uniprot ID | THY1_HUMAN |
| Immunogen | |
| Immunogen Region | 1-100 |
| Specificity | A synthetic peptide corresponding to a sequence within amino acids 1-100 of human CD90/Thy1 (P04216). |
| Immunogen Sequence | MNLAISIALLLTVLQVSRGQ KVTSLTACLVDQSLRLDCRH ENTSSSPIQYEFSLTRETCK HVLFGTVGVPEHTYRSRTNF TSKYNMKVLYLSAFTSKDEG |



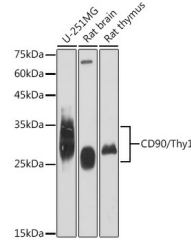
Immunohistochemistry analysis of paraffin-embedded human liver using CD90/Thy1 Rabbit monoclonal antibody (STJ11102747) at dilution of 1:100 (40x lens). Perform high pressure antigen retrieval with 10 mM citrate buffer pH 6.0 before commencing with immunohistochemistry staining protocol.



Immunohistochemistry analysis of paraffin-embedded human colon using CD90/Thy1 Rabbit monoclonal antibody (STJ11102747) at dilution of 1:100 (40x lens). Perform high pressure antigen retrieval with 10 mM citrate buffer pH 6.0 before commencing with immunohistochemistry staining protocol.



Immunohistochemistry analysis of paraffin-embedded human brain using CD90/Thy1 Rabbit monoclonal antibody (STJ11102747) at dilution of 1:100 (40x lens). Perform high pressure antigen retrieval with 10 mM citrate buffer pH 6.0 before commencing with immunohistochemistry staining protocol.



Western blot analysis of various cell lines, using CD90/Thy1 Rabbit monoclonal antibody (STJ11102747) at 1:1000 dilution. Secondary antibody: HRP Goat Anti-Rabbit IgG (H+L) (STJS000656) at 1:10000 dilution. Lysates/proteins: 25 µg per lane. Blocking buffer: 3% nonfat dry milk in TBST. Detection: ECL Basic Kit. Exposure time: 30s.

This product is suitable for in-vitro studies under the RESEARCH USE ONLY [RUO] licence. This product must not be used as for diagnostic or other medical purposes.
St John's Laboratory Ltd, Knowledge Dock Business Centre, University Way, London, E16 2RD | Tel: 0208 223 3081