

Anti-IL10 antibody (1-100) [S5MR] (STJ11102745)

STJ11102745

GENERAL INFORMATION

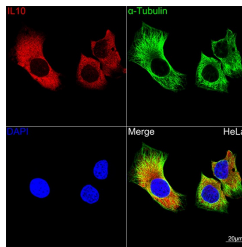
Product Type	Primary antibodies
Short Description	
Applications	WB/IF/ICC/ELISA
Host/Source	Rabbit
Reactivity	Human/Rat

PRODUCT PROPERTIES

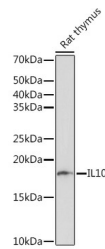
Clonality	Monoclonal
Clone ID	S5MR
Concentration	Lot specific
Conjugation	Unconjugated
Purification	Affinity purification
Dilution Range	WB:1:1000-1:2000 IF/ICC:1:50-1:200 ELISA:Recommended starting concentration is 1 Mu g/mL. Please optimize the concentration based on your specific assay requirements.
Formulation	PBS with 0.02% Sodium Azide, 0.05% BSA, 50% Glycerol, pH 7.3.
Isotype	IgG
Storage Instruction	Store at -20°C for up to 1 year from the date of receipt, and avoid repeat freeze-thaw cycles.

TARGET INFORMATION

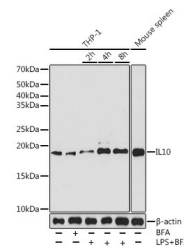
Gene ID	3586
Gene Symbol	IL10
Uniprot ID	IL10_HUMAN
Immunogen	
Region	1-100
Specificity	A synthetic peptide corresponding to a sequence within amino acids 1-100 of human IL10 (P22301).
Immunogen Sequence	MHSSALLCCLVLLTGVRASP GQGTSQNSCTHFGNLPNM LRDLRDAFSRVKTFQMKDQ LDNLLLKESLLEDFKGYLGC QALSEMIQFYLEEVMPQAEEN



Confocal imaging of HeLa cells using IL10 Rabbit monoclonal antibody (STJ11102745, dilution 1:100) (Red). The cells were counterstained with Alpha-Tubulin Mouse monoclonal antibody (dilution 1:400) (Green). DAPI was used for nuclear staining (blue). Objective: 100x.



Western blot analysis of lysates from Rat thymus, using IL10 Rabbit monoclonal antibody (STJ11102745) at 1:1000 dilution. Secondary antibody: HRP Goat Anti-Rabbit IgG (H+L) (STJS000856) at 1:10000 dilution. Lysates/proteins: 25 Mu g per lane. Blocking buffer: 3% nonfat dry milk in TBST. Detection: ECL Basic Kit. Exposure time: 180s.



Western blot analysis of various lysates using IL10 Rabbit monoclonal antibody (STJ11102745) at 1:1000 dilution. THP-1 cells were treated by LPS and Brefeldin A for different times of stimulation. Secondary antibody: HRP Goat Anti-Rabbit IgG (H+L) (STJS000856) at 1:10000 dilution. Lysates/proteins: 25 Mu g per lane. Blocking buffer: 3% nonfat dry milk in TBST. Detection: ECL Basic Kit. Exposure time: 90s.

This product is suitable for in-vitro studies under the RESEARCH USE ONLY [RUO] licence. This product must not be used as for diagnostic or other medical purposes.
St John's Laboratory Ltd, Knowledge Dock Business Centre, University Way, London, E16 2RD | Tel: 0208 223 3081