

Anti-Myeloperoxidase antibody (646-745) [S1MR] (STJ11102741)  
STJ11102741

GENERAL INFORMATION

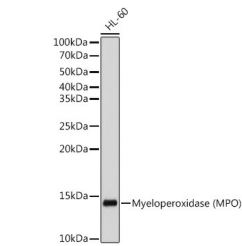
<b>Product Type</b>	Primary antibodies
<b>Short Description</b>	
<b>Applications</b>	WB/IHC-P/ELISA
<b>Host/Source</b>	Rabbit
<b>Reactivity</b>	Human

PRODUCT PROPERTIES

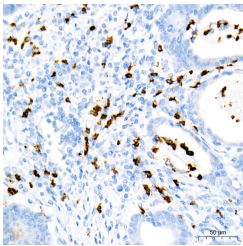
<b>Clonality</b>	Monoclonal
<b>Clone ID</b>	S1MR
<b>Concentration</b>	Lot specific
<b>Conjugation</b>	Unconjugated
<b>Purification</b>	Affinity purification
<b>Dilution Range</b>	WB:1:500-1:1000 IHC-P:1:500-1:1000 ELISA:Recommended starting concentration is 1 Mu g/mL. Please optimize the concentration based on your specific assay requirements.
<b>Formulation</b>	PBS with 0.05% Proclin300, 0.05% BSA, 50% Glycerol, pH 7.3.
<b>Isotype</b>	IgG
<b>Storage Instruction</b>	Store at -20°C for up to 1 year from the date of receipt, and avoid repeat freeze-thaw cycles.

TARGET INFORMATION

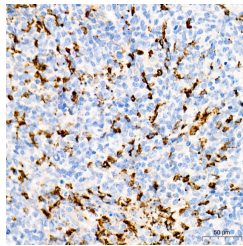
<b>Gene ID</b>	4353
<b>Gene Symbol</b>	MPO
<b>Uniprot ID</b>	PERM_HUMAN
<b>Immunogen</b>	
<b>Immunogen Region</b>	646-745
<b>Specificity</b>	A synthetic peptide corresponding to a sequence within amino acids 646-745 of human Myeloperoxidase (MPO) (NP_000241.1).
<b>Immunogen Sequence</b>	GVSEPLKRKGRVGPILLACII GTQFRKL RDGRFWWENEGV FSMQQRQALAQISLPRIICD NTGITT VSKNNIFMSNSYPR DFVNCSTLPALNLASWREAS



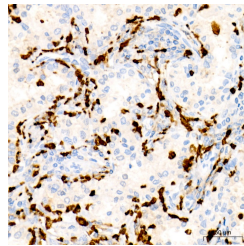
Western blot analysis of extracts of HL-60 cells, using Myeloperoxidase (MPO) antibody (STJ11102741) at 1:500 dilution. Secondary antibody: HRP Goat Anti-rabbit IgG (H+L) (STJ5000856) at 1:10000 dilution. Lysates/proteins: 25 Mu g per lane. Blocking buffer: 3% non-fat dry milk in TBST. Detection: ECL Basic Kit. Exposure time: 3s.



Immunohistochemistry analysis of paraffin-embedded human colon carcinoma using Myeloperoxidase (MPO) rabbit monoclonal antibody (STJ11102741) at dilution of 1:1000 (40x lens). Perform high pressure antigen retrieval with 10 mM Tris/EDTA buffer pH 9.0 before commencing with immunohistochemistry staining protocol.



Immunohistochemistry analysis of paraffin-embedded human extranodal NK-T cell lymphoma using Myeloperoxidase (MPO) rabbit monoclonal antibody (STJ11102741) at dilution of 1:1000 (40x lens). Perform high pressure antigen retrieval with 10 mM Tris/EDTA buffer pH 9.0 before commencing with immunohistochemistry staining protocol.



Immunohistochemistry analysis of paraffin-embedded Human hepatobiliary carcinoma using Myeloperoxidase (MPO) rabbit monoclonal antibody (STJ11102741) at dilution of 1:1000 (40x lens). Perform high pressure antigen retrieval with 10 mM Tris/EDTA buffer pH 9.0 before commencing with immunohistochemistry staining protocol.