

Anti-NCF4/p40-phox antibody (240-339) [S3MR] (STJ11102723)

STJ11102723

GENERAL INFORMATION

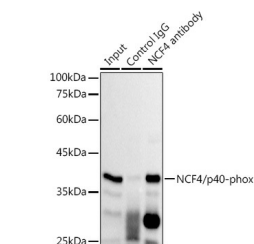
Product Type	Primary antibodies
Short Description	
Applications	WB/IHC-P/IP/ELISA
Host/Source	Rabbit
Reactivity	Human/Mouse

PRODUCT PROPERTIES

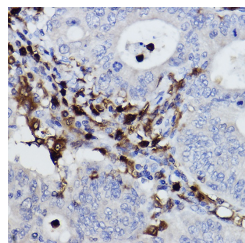
Clonality	Monoclonal
Clone ID	S3MR
Concentration	Lot specific
Conjugation	Unconjugated
Purification	Affinity purification
Dilution Range	WB:1:500-1:1000 IHC-P:1:50-1:200 IP:0.5 Mu g-4 Mu g antibody for 200 Mu g-400 Mu g extracts of whole cells ELISA:Recommended starting concentration is 1 Mu g/mL. Please optimize the concentration based on your specific assay requirements.
Formulation	PBS with 0.02% Sodium Azide, 0.05% BSA, 50% Glycerol, pH 7.3.
Isotype	IgG
Storage Instruction	Store at -20°C for up to 1 year from the date of receipt, and avoid repeat freeze-thaw cycles.

TARGET INFORMATION

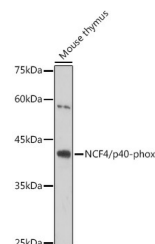
Gene ID	4689
Gene Symbol	NCF4
Uniprot ID	NCF4_HUMAN
Immunogen	
Immunogen Region	240-339
Specificity	A synthetic peptide corresponding to a sequence within amino acids 240-339 of human NCF4/p40-phox (Q15080).
Immunogen Sequence	LRCYYYEDTISTIKDIAVEE DLSSTPLKDLLELTRREFQ REDIALNYRDAEGDLVRLLS DEDVALMVRQARGLP SQKRL FPWKHLITQKDNRYVYNTMP



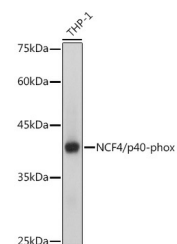
Immunoprecipitation analysis of 300 Mu g extracts of THP-1 cells using 3 Mu g NCF4/p40-phox antibody (STJ11102723). Western blot was performed from the immunoprecipitate using NCF4/p40-phox antibody (STJ11102723) at a dilution of 1:1000.



Immunohistochemistry analysis of NCF4/p40-phox in paraffin-embedded human colon carcinoma using NCF4/p40-phox Rabbit monoclonal antibody (STJ11102723) at dilution of 1:100 (40x lens). Perform high pressure antigen retrieval with 10 mM citrate buffer pH 6.0 before commencing with immunohistochemistry staining protocol.



Western blot analysis of lysates from Mouse thymus, using NCF4/p40-phox Rabbit monoclonal antibody (STJ11102723) at 1:1000 dilution. Secondary antibody: HRP Goat Anti-Rabbit IgG (H+L) (STJS000856) at 1:10000 dilution. Lysates/proteins: 25 Mu g per lane. Blocking buffer: 3% nonfat dry milk in TBST. Detection: ECL Enhanced Kit. Exposure time: 180s.



Western blot analysis of lysates from THP-1 cells, using NCF4/p40-phox Rabbit monoclonal antibody (STJ11102723) at 1:1000 dilution. Secondary antibody: HRP Goat Anti-Rabbit IgG (H+L) (STJS000856) at 1:10000 dilution. Lysates/proteins: 25 Mu g per lane. Blocking buffer: 3% nonfat dry milk in TBST. Detection: ECL Basic Kit. Exposure time: 1s.

This product is suitable for in-vitro studies under the RESEARCH USE ONLY [RUO] licence. This product must not be used as for diagnostic or other medical purposes.
St John's Laboratory Ltd, Knowledge Dock Business Centre, University Way, London, E16 2RD | Tel: 0208 223 3081