

Anti-USP24 antibody (2500-2600) [S9MR] (STJ11102699)

STJ11102699

GENERAL INFORMATION

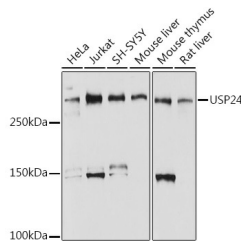
Product Type	Primary antibodies
Short Description	
Applications	WB/ELISA
Host/Source	Rabbit
Reactivity	Human/Mouse/Rat

PRODUCT PROPERTIES

Clonality	Monoclonal
Clone ID	S9MR
Concentration	Lot specific
Conjugation	Unconjugated
Purification	Affinity purification
Dilution Range	WB:1:500-1:1000 ELISA: Recommended starting concentration is 1 Mu g/mL. Please optimize the concentration based on your specific assay requirements.
Formulation	PBS with 0.02% Sodium Azide, 0.05% BSA, 50% Glycerol, pH 7.3.
Isotype	IgG
Storage	Store at -20°C for up to 1 year from the date of receipt, and avoid repeat freeze-thaw cycles.
Instruction	

TARGET INFORMATION

Gene ID	23358
Gene Symbol	USP24
Uniprot ID	UBP24_HUMAN
Immunogen	
Immunogen Region	2500-2600
Specificity	A synthetic peptide corresponding to a sequence within amino acids 2500-2600 of human USP24 (Q9UPU5).
Immunogen Sequence	VKFLVTLAQKCPAAKEYFKE NSHHWSWAVQWLQKKMSEHY WTPQSNVSNETSTGKTFQRT ISAQDTLAYATALLNEKEQS GSSNGSESSPANENGDRHLQ Q



Western blot analysis of various lysates, using USP24 antibody (STJ11102699) at 1:1000 dilution. Secondary antibody: HRP Goat Anti-Rabbit IgG (H+L) (STJSD00856) at 1:10000 dilution. Lysates/proteins: 25 Mu g per lane. Blocking buffer: 3% nonfat dry milk in TBST. Detection: ECL Basic Kit. Exposure time: 1s.

This product is suitable for in-vitro studies under the RESEARCH USE ONLY [RUO] licence. This product must not be used as for diagnostic or other medical purposes.
St John's Laboratory Ltd, Knowledge Dock Business Centre, University Way, London, E16 2RD | Tel: 0208 223 3081