

Anti-HDGF antibody (100-200) [S4MR] (STJ11102694)
STJ11102694

GENERAL INFORMATION

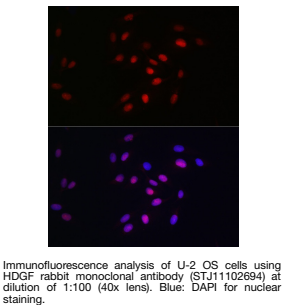
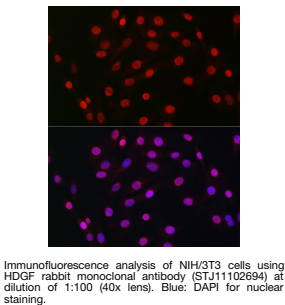
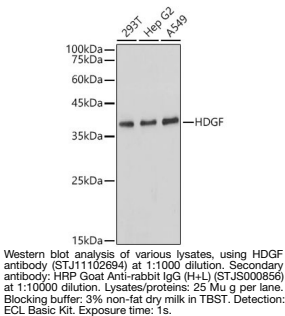
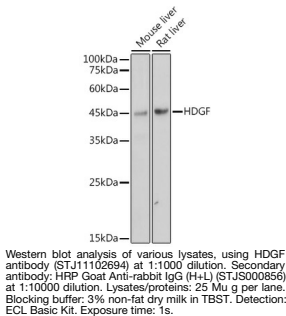
| | |
|--------------------------|--------------------|
| Product Type | Primary antibodies |
| Short Description | |
| Applications | WB/IF/ICC/ELISA |
| Host/Source | Rabbit |
| Reactivity | Human/Mouse/Rat |

PRODUCT PROPERTIES

| | |
|----------------------------|---|
| Clonality | Monoclonal |
| Clone ID | S4MR |
| Concentration | Lot specific |
| Conjugation | Unconjugated |
| Purification | Affinity purification |
| Dilution Range | WB:1:500-1:1000 IF/ICC:1:50-1:200 ELISA:Recommended starting concentration is 1 Mu g/mL. Please optimize the concentration based on your specific assay requirements. |
| Formulation | PBS with 0.02% Sodium Azide, 0.05% BSA, 50% Glycerol, pH 7.3. |
| Isotype | IgG |
| Storage Instruction | Store at -20°C for up to 1 year from the date of receipt, and avoid repeat freeze-thaw cycles. |

TARGET INFORMATION

| | |
|---------------------------|--|
| Gene ID | 3068 |
| Gene Symbol | HDGF |
| Uniprot ID | HDGF_HUMAN |
| Immunogen | |
| Immunogen Region | 100-200 |
| Specificity | A synthetic peptide corresponding to a sequence within amino acids 100-200 of human HDGF (P51858). |
| Immunogen Sequence | YQSSQKKSCVEEPEPEPEAA EGDGDKKGNAEGSSDEEGKL VIDEPAKEKNEKGALKRRAG DLLEDSPKRPKEAENPEGEE KEAATLEVERPLPMEVEKNS T |



This product is suitable for in-vitro studies under the RESEARCH USE ONLY [RUO] licence. This product must not be used as for diagnostic or other medical purposes.
St John's Laboratory Ltd, Knowledge Dock Business Centre, University Way, London, E16 2RD | Tel: 0208 223 3081