

Anti-GBP1 antibody (493-592) [S3MR] (STJ11102693)
STJ11102693

GENERAL INFORMATION

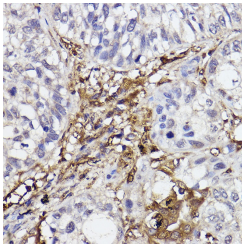
Product Type	Primary antibodies
Short Description	
Applications	WB/IHC-P/ELISA
Host/Source	Rabbit
Reactivity	Human/Rat

PRODUCT PROPERTIES

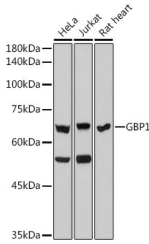
Clonality	Monoclonal
Clone ID	S3MR
Concentration	Lot specific
Conjugation	Unconjugated
Purification	Affinity purification
Dilution Range	WB:1:500-1:1000 IHC-P:1:50-1:200 ELISA:Recommended starting concentration is 1 Mu g/mL. Please optimize the concentration based on your specific assay requirements.
Formulation	PBS with 0.02% Sodium Azide, 0.05% BSA, 50% Glycerol, pH 7.3.
Isotype	IgG
Storage Instruction	Store at -20°C for up to 1 year from the date of receipt, and avoid repeat freeze-thaw cycles.

TARGET INFORMATION

Gene ID	2633
Gene Symbol	GBP1
Uniprot ID	GBP1_HUMAN
Immunogen	
Immunogen Region	493-592
Specificity	A synthetic peptide corresponding to a sequence within amino acids 493-592 of human GBP1 (P32455).
Immunogen Sequence	RVKAESAQASAKMLQEMQQRK NEQMMEQKERSYQEHLKQLT EKMENDRVQLLKEQERTLAL KLQEQEQLLKEGFQKESRIM KNEIQDLQTKMRRRKACTIS



Immunohistochemistry analysis of paraffin-embedded human lung cancer using GBP1 Rabbit monoclonal antibody (STJ11102693) at dilution of 1:100 (40x lens). Perform high pressure antigen retrieval with 10 mM citrate buffer pH 6.0 before commencing with immunohistochemistry staining protocol.



Western blot analysis of extracts of various cell lines, using GBP1 antibody (STJ11102693) at 1:1000 dilution. Secondary antibody: HRP Goat Anti-Rabbit IgG (H+L) (STJS000856) at 1:10000 dilution. Lysates/proteins: 25 Mu g per lane. Blocking buffer: 3% nonfat dry milk in TBST. Detection: ECL Basic Kit. Exposure time: 180s.

This product is suitable for in-vitro studies under the RESEARCH USE ONLY [RUO] licence. This product must not be used as for diagnostic or other medical purposes.
St John's Laboratory Ltd, Knowledge Dock Business Centre, University Way, London, E16 2RD | Tel: 0208 223 3081