

Anti-UBE2B antibody (53-152) [S8MR] (STJ11102688)

STJ11102688

GENERAL INFORMATION

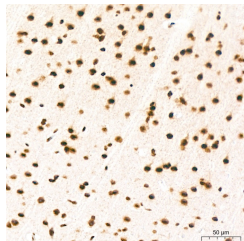
Product Type	Primary antibodies
Short Description	
Applications	WB/IHC-P/ELISA
Host/Source	Rabbit
Reactivity	Human/Mouse/Rat

PRODUCT PROPERTIES

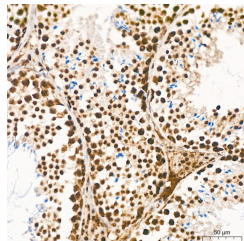
Clonality	Monoclonal
Clone ID	S8MR
Concentration	Lot specific
Conjugation	Unconjugated
Purification	Affinity purification
Dilution Range	WB:1:1000-1:6000 IHC-P:1:500-1:5000 ELISA:Recommended starting concentration is 1 µg/mL. Please optimize the concentration based on your specific assay requirements.
Formulation	PBS with 0.02% Sodium Azide, 0.05% BSA, 50% Glycerol, pH 7.3.
Isotype	IgG
Storage Instruction	Store at -20°C for up to 1 year from the date of receipt, and avoid repeat freeze-thaw cycles.

TARGET INFORMATION

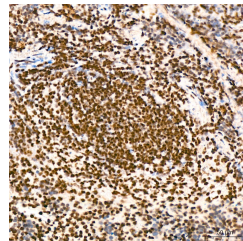
Gene ID	7320
Gene Symbol	UBE2B
Uniprot ID	UBE2B_HUMAN
Immunogen	
Immunogen Region	53-152
Specificity	A synthetic peptide corresponding to a sequence within amino acids 53-152 of human UBE2B (P63146).
Immunogen Sequence	FKLVIEFSEEYPNKPPTVRF LSKMFHPNVYADGSICLDIL QNRWSPTYDVSSILTSIQSL LDEPNPNSPANQAQLYQE NKREYEKRVSAIVEQSWNDS



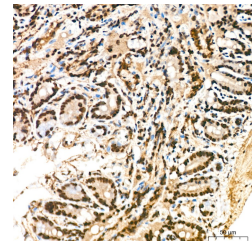
Immunohistochemistry analysis of UBE2B in paraffin-embedded rat brain tissue using UBE2B Rabbit monoclonal antibody (STJ11102688) at a dilution of 1:800 (40x lens). High pressure antigen retrieval was performed with 0.01 M citrate buffer (pH 6.0) prior to immunohistochemistry staining.



Immunohistochemistry analysis of UBE2B in paraffin-embedded mouse testis tissue using UBE2B Rabbit monoclonal antibody (STJ11102688) at a dilution of 1:800 (40x lens). High pressure antigen retrieval was performed with 0.01 M citrate buffer (pH 6.0) prior to immunohistochemistry staining.



Immunohistochemistry analysis of UBE2B in paraffin-embedded mouse spleen tissue using UBE2B Rabbit monoclonal antibody (STJ11102688) at a dilution of 1:800 (40x lens). High pressure antigen retrieval was performed with 0.01 M citrate buffer (pH 6.0) prior to immunohistochemistry staining.



Immunohistochemistry analysis of UBE2B in paraffin-embedded mouse colon tissue using UBE2B Rabbit monoclonal antibody (STJ11102688) at a dilution of 1:800 (40x lens). High pressure antigen retrieval was performed with 0.01 M citrate buffer (pH 6.0) prior to immunohistochemistry staining.

This product is suitable for in-vitro studies under the RESEARCH USE ONLY [RUO] licence. This product must not be used as for diagnostic or other medical purposes.
St John's Laboratory Ltd, Knowledge Dock Business Centre, University Way, London, E16 2RD | Tel: 0208 223 3081