

Anti-CTBP2 antibody (346-445) [S5MR] (STJ11102685)
STJ11102685

GENERAL INFORMATION

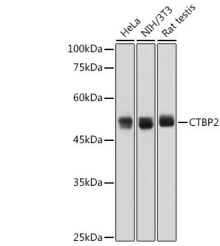
Product Type	Primary antibodies
Short Description	
Applications	WB/IHC-P/IF/ICC/IP/ELISA
Host/Source	Rabbit
Reactivity	Human/Mouse/Rat

PRODUCT PROPERTIES

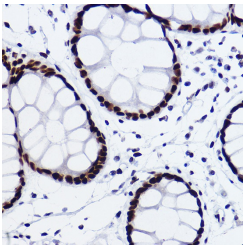
Clonality	Monoclonal
Clone ID	S5MR
Concentration	Lot specific
Conjugation	Unconjugated
Purification	Affinity purification
Dilution Range	WB:1:500-1:1000 IHC-P:1:50-1:200 IF/ICC:1:50-1:200 IP:0.5 Mu g-4 Mu g antibody for 200 Mu g-400 Mu g extracts of whole cells ELISA:Recommended starting concentration is 1 Mu g/mL. Please optimize the concentration based on your specif
Formulation	PBS with 0.02% Sodium Azide, 0.05% BSA, 50% Glycerol, pH 7.3.
Isotype	IgG
Storage Instruction	Store at -20°C for up to 1 year from the date of receipt, and avoid repeat freeze-thaw cycles.

TARGET INFORMATION

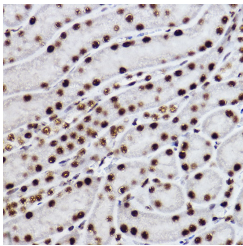
Gene ID	1488
Gene Symbol	CTBP2
Uniprot ID	CTBP2_HUMAN
Immunogen	
Immunogen Region	346-445
Specificity	A synthetic peptide corresponding to a sequence within amino acids 346-445 of human CTBP2 (P56545).
Immunogen Sequence	TGRIPESLRNCVNKEFFVTS APWSVIDQQAHPENLGATY RYPGIVGVAPGGLPAAMEG IIPGGIPVTHNLPTVAHPSQ APSPNQPTKHGDNREHPNEQ



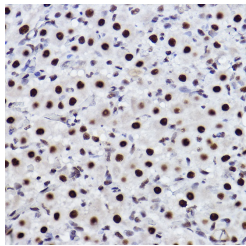
Western blot analysis of extracts of various cell lines, using CTBP2 antibody (STJ11102685) at 1:1000 dilution. Secondary antibody: HRP Goat Anti-rabbit IgG (H+L) (STJS000856) at 1:10000 dilution. Lysates/proteins: 25 Mu g per lane. Blocking buffer: 3% non-fat dry milk in TBST. Detection: ECL Basic Kit. Exposure time: 1s.



Immunohistochemistry analysis of paraffin-embedded human colon carcinoma using CTBP2 rabbit monoclonal antibody (STJ11102685) at dilution of 1:100 (40x lens). Perform high pressure antigen retrieval with 10 mM citrate buffer pH 6.0 before commencing with immunohistochemistry staining protocol.



Immunohistochemistry analysis of paraffin-embedded mouse kidney using CTBP2 rabbit monoclonal antibody (STJ11102685) at dilution of 1:100 (40x lens). Perform high pressure antigen retrieval with 10 mM citrate buffer pH 6.0 before commencing with immunohistochemistry staining protocol.



Immunohistochemistry analysis of paraffin-embedded rat ovary using CTBP2 rabbit monoclonal antibody (STJ11102685) at dilution of 1:100 (40x lens). Perform high pressure antigen retrieval with 10 mM citrate buffer pH 6.0 before commencing with immunohistochemistry staining protocol.

This product is suitable for in-vitro studies under the RESEARCH USE ONLY [RUO] licence. This product must not be used as for diagnostic or other medical purposes.
St John's Laboratory Ltd, Knowledge Dock Business Centre, University Way, London, E16 2RD | Tel: 0208 223 3081