

Anti-EXOSC7 antibody (192-291) [S9MR] (STJ11102679)

STJ11102679

GENERAL INFORMATION

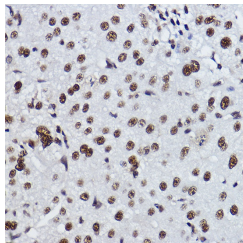
Product Type	Primary antibodies
Short Description	
Applications	WB/IHC-P/ELISA
Host/Source	Rabbit
Reactivity	Human

PRODUCT PROPERTIES

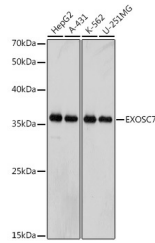
Clonality	Monoclonal
Clone ID	S9MR
Concentration	Lot specific
Conjugation	Unconjugated
Purification	Affinity purification
Dilution Range	WB:1:500-1:1000 IHC-P:1:50-1:200 ELISA:Recommended starting concentration is 1 Mu g/mL. Please optimize the concentration based on your specific assay requirements.
Formulation	PBS with 0.02% Sodium Azide, 0.05% BSA, 50% Glycerol, pH 7.3.
Isotype	IgG
Storage Instruction	Store at -20°C for up to 1 year from the date of receipt, and avoid repeat freeze-thaw cycles.

TARGET INFORMATION

Gene ID	23016
Gene Symbol	EXOSC7
Uniprot ID	EXOS7_HUMAN
Immunogen	
Immunogen Region	192-291
Specificity	A synthetic peptide corresponding to a sequence within amino acids 192-291 of human EXOSC7 (Q15024).
Immunogen Sequence	LSVENVPCIVTLCKIGYRHV VDATLQEEACSLASLLVSVT SKGVVTCMRKVGKGLDPES IFEMMETGKRVGKVLHASLQ SVVHKESLGPKRQKVGFLG



Immunohistochemistry analysis of paraffin-embedded human liver cancer using EXOSC7 Rabbit monoclonal antibody (STJ11102679) at dilution of 1:100 (40x lens). Perform high pressure antigen retrieval with 10 mM citrate buffer, pH 8.0 before commencing with immunohistochemistry staining protocol.



Western blot analysis of various lysates, using EXOSC7 antibody (STJ11102679) at 1:1000 dilution. Secondary antibody: HRP Goat Anti-Rabbit IgG (H+L) (STJ5000856) at 1:10000 dilution. Lysates/proteins: 25 Mu g per lane. Blocking buffer: 3% nonfat dry milk in TBST. Detection: ECL Basic Kit. Exposure time: 10s.

This product is suitable for in-vitro studies under the RESEARCH USE ONLY [RUO] licence. This product must not be used as for diagnostic or other medical purposes.
St John's Laboratory Ltd, Knowledge Dock Business Centre, University Way, London, E16 2RD | Tel: 0208 223 3081