

Anti-Phospho-LIPE-S853 antibody [S4MR] (STJ11102644)

STJ11102644

GENERAL INFORMATION

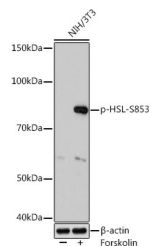
Product Type	Primary antibodies
Short Description	
Applications	WB/ELISA
Host/Source	Rabbit
Reactivity	Mouse

PRODUCT PROPERTIES

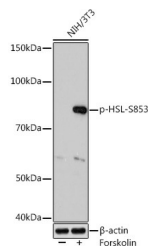
Clonality	Monoclonal
Clone ID	S4MR
Concentration	Lot specific
Conjugation	Unconjugated
Purification	Affinity purification
Dilution Range	WB:1:500-1:1000 ELISA:Recommended starting concentration is 1 μ g/mL. Please optimize the concentration based on your specific assay requirements.
Formulation	PBS with 0.02% Sodium Azide, 0.05% BSA, 50% Glycerol, pH 7.3.
Isotype	IgG
Storage Instruction	Store at -20°C for up to 1 year from the date of receipt, and avoid repeat freeze-thaw cycles.

TARGET INFORMATION

Gene ID	3991
Gene Symbol	LIPE
Uniprot ID	LIPS_HUMAN
Immunogen	RRSVS
Immunogen Region	
Specificity	A synthetic phosphorylated peptide around S853 of human HSL (Q05469).
Immunogen Sequence	RRSVS



Western blot analysis of extracts of NIH/3T3 cells, using Phospho-HSL-S853 rabbit monoclonal antibody (STJ11102644) at 1:1000 dilution. NIH/3T3 cells were treated by Forskolin (30 μ M) at 37 °C for 30 minutes after serum-starvation overnight. Secondary antibody: HRP Goat Anti-rabbit IgG (H+L) at 1:10000 dilution. Lysates/proteins: 25 μ g per lane. Blocking buffer: 3% BSA. Detection: ECL Basic Kit. Exposure time: 3min.



Western blot analysis of extracts of NIH/3T3 cells, using Phospho-HSL-S853 Rabbit monoclonal antibody (STJ11102644) at 1:1000 dilution. NIH/3T3 cells were treated by Forskolin (30 μ M) at 37 °C for 30 minutes after serum-starvation overnight. Secondary antibody: HRP Goat Anti-Rabbit IgG (H+L) (STJ3000856) at 1:10000 dilution. Lysates/proteins: 25 μ g per lane. Blocking buffer: 3% BSA. Detection: ECL Basic Kit. Exposure time: 3min.

This product is suitable for in-vitro studies under the RESEARCH USE ONLY [RUO] licence. This product must not be used as for diagnostic or other medical purposes.
St John's Laboratory Ltd, Knowledge Dock Business Centre, University Way, London, E16 2RD | Tel: 0208 223 3081