

Anti-Phospho-JUND-S255 antibody [S8MR] (STJ11102638)

STJ11102638

GENERAL INFORMATION

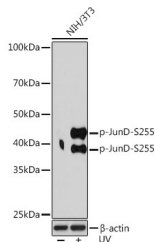
Product Type	Primary antibodies
Short Description	
Applications	WB/ELISA
Host/Source	Rabbit
Reactivity	Mouse

PRODUCT PROPERTIES

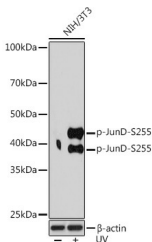
Clonality	Monoclonal
Clone ID	S8MR
Concentration	Lot specific
Conjugation	Unconjugated
Purification	Affinity purification
Dilution Range	WB:1:500-1:2000 ELISA:Recommended starting concentration is 1 μ g/mL. Please optimize the concentration based on your specific assay requirements.
Formulation	PBS with 0.02% Sodium Azide, 0.05% BSA, 50% Glycerol, pH 7.3.
Isotype	IgG
Storage Instruction	Store at -20°C for up to 1 year from the date of receipt, and avoid repeat freeze-thaw cycles.

TARGET INFORMATION

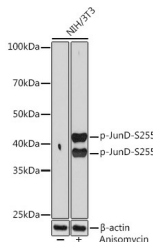
Gene ID	3727
Gene Symbol	JUND
Uniprot ID	JUND_HUMAN
Immunogen	GESPP
Immunogen Region	
Specificity	A synthetic phosphorylated peptide around S255 of human JunD (P17535).
Immunogen Sequence	GESPP



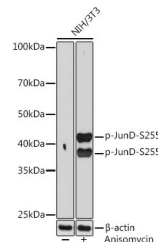
Western blot analysis of extracts of NIH/3T3 cells, using Phospho-JunD-S255 rabbit monoclonal antibody (STJ11102638) at 1:1000 dilution. NIH/3T3 cells were treated by Anisomycin (25 μ g/mL) at 37 $^{\circ}$ C for 30 minutes. Secondary antibody: HRP Goat Anti-rabbit IgG (H+L) at 1:10000 dilution. Lysates/proteins: 25 μ g per lane. Blocking buffer: 3% BSA. Detection: ECL Basic Kit. Exposure time: 90s.



Western blot analysis of extracts of NIH/3T3 cells, using Phospho-JunD-S255 Rabbit monoclonal antibody (STJ11102638) at 1:1000 dilution. NIH/3T3 cells were treated by UV at room temperature for 15-30 minutes. Secondary antibody: HRP Goat Anti-Rabbit IgG (H+L) (STJ5000856) at 1:10000 dilution. Lysates/proteins: 25 μ g per lane. Blocking buffer: 3% BSA. Detection: ECL Enhanced Kit. Exposure time: 3min.



Western blot analysis of extracts of NIH/3T3 cells, using Phospho-JunD-S255 rabbit monoclonal antibody (STJ11102638) at 1:1000 dilution. NIH/3T3 cells were treated by UV at room temperature for 15-30 minutes. Secondary antibody: HRP Goat Anti-rabbit IgG (H+L) at 1:10000 dilution. Lysates/proteins: 25 μ g per lane. Blocking buffer: 3% BSA. Detection: ECL Enhanced Kit. Exposure time: 3min.



Western blot analysis of extracts of NIH/3T3 cells, using Phospho-JunD-S255 Rabbit monoclonal antibody (STJ11102638) at 1:1000 dilution. NIH/3T3 cells were treated by Anisomycin (25 μ g/mL) at 37 $^{\circ}$ C for 30 minutes. Secondary antibody: HRP Goat Anti-Rabbit IgG (H+L) (STJ5000856) at 1:10000 dilution. Lysates/proteins: 25 μ g per lane. Blocking buffer: 3% BSA. Detection: ECL Basic Kit. Exposure time: 90s.

This product is suitable for in-vitro studies under the RESEARCH USE ONLY [RUO] licence. This product must not be used as for diagnostic or other medical purposes.

St John's Laboratory Ltd, Knowledge Dock Business Centre, University Way, London, E16 2RD | Tel: 0208 223 3081