

# Anti-Phospho-ERBB3-Y1222 antibody [S2MR] (STJ11102622)

STJ11102622

## GENERAL INFORMATION

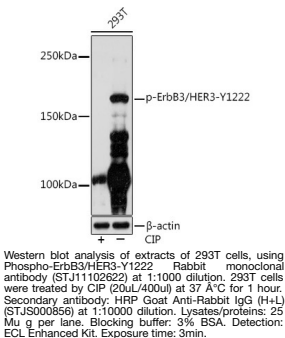
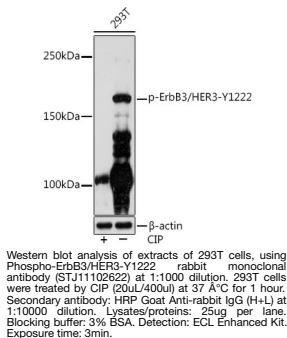
<b>Product Type</b>	Primary antibodies
<b>Short Description</b>	
<b>Applications</b>	WB/ELISA
<b>Host/Source</b>	Rabbit
<b>Reactivity</b>	Human

## PRODUCT PROPERTIES

<b>Clonality</b>	Monoclonal
<b>Clone ID</b>	S2MR
<b>Concentration</b>	Lot specific
<b>Conjugation</b>	Unconjugated
<b>Purification</b>	Affinity purification
<b>Dilution Range</b>	WB:1:500-1:2000 ELISA:Recommended starting concentration is 1 $\mu$ g/mL. Please optimize the concentration based on your specific assay requirements.
<b>Formulation</b>	PBS with 0.02% Sodium Azide, 0.05% BSA, 50% Glycerol, pH 7.3.
<b>Isotype</b>	IgG
<b>Storage Instruction</b>	Store at -20°C for up to 1 year from the date of receipt, and avoid repeat freeze-thaw cycles.

## TARGET INFORMATION

<b>Gene ID</b>	2065
<b>Gene Symbol</b>	ERBB3
<b>Uniprot ID</b>	ERBB3_HUMAN
<b>Immunogen</b>	LGYEY
<b>Immunogen Region</b>	
<b>Specificity</b>	A synthetic phosphorylated peptide around Y1222 of human ERBB3 (P21860).
<b>Immunogen Sequence</b>	LGYEY



This product is suitable for in-vitro studies under the RESEARCH USE ONLY [RUO] licence. This product must not be used as for diagnostic or other medical purposes.  
St John's Laboratory Ltd, Knowledge Dock Business Centre, University Way, London, E16 2RD | Tel: 0208 223 3081