

## Anti-Phospho-CHEK1-S296 antibody [S8MR] (STJ11102618)

STJ11102618

### GENERAL INFORMATION

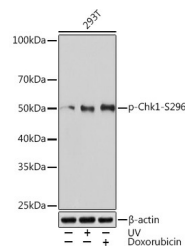
<b>Product Type</b>	Primary antibodies
<b>Short Description</b>	
<b>Applications</b>	WB/ELISA
<b>Host/Source</b>	Rabbit
<b>Reactivity</b>	Human

### PRODUCT PROPERTIES

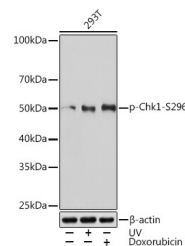
<b>Clonality</b>	Monoclonal
<b>Clone ID</b>	S8MR
<b>Concentration</b>	Lot specific
<b>Conjugation</b>	Unconjugated
<b>Purification</b>	Affinity purification
<b>Dilution Range</b>	WB:1:500-1:1000 ELISA:Recommended starting concentration is 1 µg/mL. Please optimize the concentration based on your specific assay requirements.
<b>Formulation</b>	PBS with 0.02% Sodium Azide, 0.05% BSA, 50% Glycerol, pH 7.3.
<b>Isotype</b>	IgG
<b>Storage Instruction</b>	Store at -20°C for up to 1 year from the date of receipt, and avoid repeat freeze-thaw cycles.

### TARGET INFORMATION

<b>Gene ID</b>	1111
<b>Gene Symbol</b>	CHEK1
<b>Uniprot ID</b>	CHK1_HUMAN
<b>Immunogen</b>	IQSNL
<b>Immunogen Region</b>	
<b>Specificity</b>	A synthetic phosphorylated peptide around S296 of human Chk1 (O14757).
<b>Immunogen Sequence</b>	IQSNL



Western blot analysis of extracts of 293T cells, using Phospho-Chk1-S296 rabbit monoclonal antibody (STJ11102618) at 1:1000 dilution. 293T cells were treated by UV at room temperature for 15-30 minutes and Doxorubicin (0.5 µM) at 37 °C for 24 hours. Secondary antibody: HRP Goat Anti-rabbit IgG (H+L) at 1:10000 dilution. Lysates/proteins: 25 µg per lane. Blocking buffer: 3% BSA. Detection: ECL Basic Kit. Exposure time: 3min.



Western blot analysis of extracts of 293T cells, using Phospho-Chk1-S296 Rabbit monoclonal antibody (STJ11102618) at 1:1000 dilution. 293T cells were treated by UV at room temperature for 15-30 minutes and Doxorubicin (0.5 µM) at 37 °C for 24 hours. Secondary antibody: HRP Goat Anti-Rabbit IgG (H+L) (STJS000856) at 1:10000 dilution. Lysates/proteins: 25 µg per lane. Blocking buffer: 3% BSA. Detection: ECL Basic Kit. Exposure time: 3min.

This product is suitable for in-vitro studies under the RESEARCH USE ONLY [RUO] licence. This product must not be used as for diagnostic or other medical purposes.  
St John's Laboratory Ltd, Knowledge Dock Business Centre, University Way, London, E16 2RD | Tel: 0208 223 3081