

Anti-Phospho-PRKAR2A-S99 antibody [S3MR] (STJ11102613)

STJ11102613

GENERAL INFORMATION

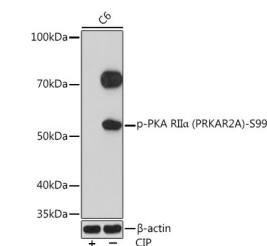
Product Type	Primary antibodies
Short Description	
Applications	WB/ELISA
Host/Source	Rabbit
Reactivity	Human/Rat

PRODUCT PROPERTIES

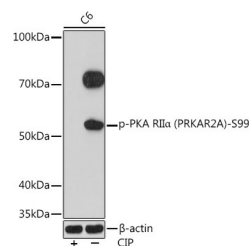
Clonality	Monoclonal
Clone ID	S3MR
Concentration	Lot specific
Conjugation	Unconjugated
Purification	Affinity purification
Dilution Range	WB:1:500-1:1000 ELISA:Recommended starting concentration is 1 µg/mL. Please optimize the concentration based on your specific assay requirements.
Formulation	PBS with 0.02% Sodium Azide, 0.05% BSA, 50% Glycerol, pH 7.3.
Isotype	IgG
Storage Instruction	Store at -20°C for up to 1 year from the date of receipt, and avoid repeat freeze-thaw cycles.

TARGET INFORMATION

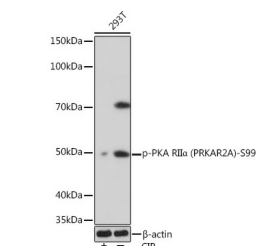
Gene ID	5576
Gene Symbol	PRKAR2A
Uniprot ID	KAP2_HUMAN
Immunogen	RVSVC
Immunogen Region	
Specificity	A synthetic phosphorylated peptide around S99 of human PRKAR2A/PKR2 (P13861).
Immunogen Sequence	RVSVC



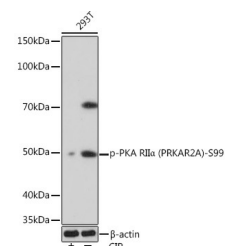
Western blot analysis of extracts of 293T cells, using Phospho-PKA RI α (PRKAR2A)-S99 rabbit monoclonal antibody (STJ11102613) at 1:1000 dilution. 293T cells were treated by CIP (20µL/400ul) at 37 °C for 1 hour. Secondary antibody: HRP Goat Anti-Rabbit IgG (H+L) at 1:10000 dilution. Lysates/proteins: 25µg per lane. Blocking buffer: 3% BSA. Detection: ECL Basic Kit. Exposure time: 90s.



Western blot analysis of extracts of C6 cells, using Phospho-PKA RI α (PRKAR2A)-S99 Rabbit monoclonal antibody (STJ11102613) at 1:1000 dilution. C6 cells were treated by CIP (20µL/400ul) at 37 °C for 1 hour. Secondary antibody: HRP Goat Anti-Rabbit IgG (H+L) (STJ300856) at 1:10000 dilution. Lysates/proteins: 25 µg per lane. Blocking buffer: 3% BSA. Detection: ECL Basic Kit. Exposure time: 3min.



Western blot analysis of extracts of C6 cells, using Phospho-PKA RI α (PRKAR2A)-S99 rabbit monoclonal antibody (STJ11102613) at 1:1000 dilution. C6 cells were treated by CIP (20µL/400ul) at 37 °C for 1 hour. Secondary antibody: HRP Goat Anti-Rabbit IgG (H+L) at 1:10000 dilution. Lysates/proteins: 25µg per lane. Blocking buffer: 3% BSA. Detection: ECL Basic Kit. Exposure time: 3min.



Western blot analysis of extracts of 293T cells, using Phospho-PKA RI α (PRKAR2A)-S99 Rabbit monoclonal antibody (STJ11102613) at 1:1000 dilution. 293T cells were treated by CIP (20µL/400ul) at 37 °C for 1 hour. Secondary antibody: HRP Goat Anti-Rabbit IgG (H+L) (STJ300856) at 1:10000 dilution. Lysates/proteins: 25 µg per lane. Blocking buffer: 3% BSA. Detection: ECL Basic Kit. Exposure time: 90s.

This product is suitable for in-vitro studies under the RESEARCH USE ONLY [RUO] licence. This product must not be used as for diagnostic or other medical purposes.
St John's Laboratory Ltd, Knowledge Dock Business Centre, University Way, London, E16 2RD | Tel: 0208 223 3081