

Anti-Phospho-HSPB1-S82 antibody [S1MR] (STJ11102611)

STJ11102611

GENERAL INFORMATION

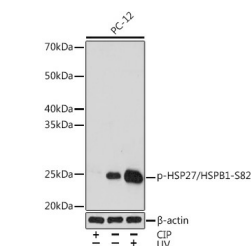
Product Type	Primary antibodies
Short Description	
Applications	WB/ELISA
Host/Source	Rabbit
Reactivity	Human/Rat

PRODUCT PROPERTIES

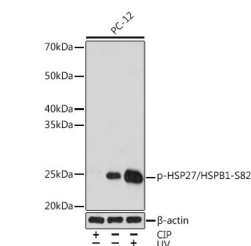
Clonality	Monoclonal
Clone ID	S1MR
Concentration	Lot specific
Conjugation	Unconjugated
Purification	Affinity purification
Dilution Range	WB:1:500-1:2000 ELISA:Recommended starting concentration is 1 μ g/mL. Please optimize the concentration based on your specific assay requirements.
Formulation	PBS with 0.02% Sodium Azide, 0.05% BSA, 50% Glycerol, pH 7.3.
Isotype	IgG
Storage Instruction	Store at -20°C for up to 1 year from the date of receipt, and avoid repeat freeze-thaw cycles.

TARGET INFORMATION

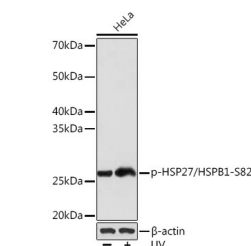
Gene ID	3315
Gene Symbol	HSPB1
Uniprot ID	HSPB1_HUMAN
Immunogen	QLSSG
Immunogen Region	
Specificity	A synthetic phosphorylated peptide around S82 of human HSP27/HSPB1HSPB1 (P04792).
Immunogen Sequence	QLSSG



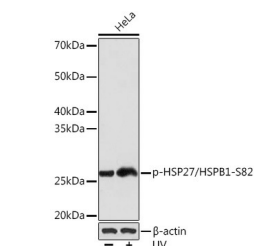
Western blot analysis of extracts of PC-12 cells, using Phospho-Hsp27-S82 rabbit monoclonal antibody (STJ11102611) at 1:1000 dilution. HeLa cells were treated by UV at room temperature for 15-30 minutes. Secondary antibody: HRP Goat Anti-Rabbit IgG (H+L) at 1:10000 dilution. Lysates/proteins: 25 μ g per lane. Blocking buffer: 3% BSA. Detection: ECL Basic Kit. Exposure time: 3s.



Western blot analysis of extracts of PC-12 cells, using Phospho-HSP27/HSPB1-S82 Rabbit monoclonal antibody (STJ11102611) at 1:1000 dilution. PC-12 cells were treated by CIP (20 μ L/400 μ L) at 37 $^{\circ}$ C for 1 hour or treated by UV at room temperature for 15-30 minutes. Secondary antibody: HRP Goat Anti-Rabbit IgG (H+L) (STJS000856) at 1:10000 dilution. Lysates/proteins: 25 μ g per lane. Blocking buffer: 3% BSA. Detection: ECL Basic Kit. Exposure time: 90s.



Western blot analysis of extracts of PC-12 cells, using Phospho-Hsp27-S82 rabbit monoclonal antibody (STJ11102611) at 1:1000 dilution. PC-12 cells were treated by CIP (20 μ L/400 μ L) at 37 $^{\circ}$ C for 1 hour or treated by UV at room temperature for 15-30 minutes. Secondary antibody: HRP Goat Anti-rabbit IgG (H+L) at 1:10000 dilution. Lysates/proteins: 25 μ g per lane. Blocking buffer: 3% BSA. Detection: ECL Basic Kit. Exposure time: 90s.



Western blot analysis of extracts of HeLa cells, using Phospho-HSP27/HSPB1-S82 Rabbit monoclonal antibody (STJ11102611) at 1:1000 dilution. HeLa cells were treated by UV at room temperature for 15-30 minutes. Secondary antibody: HRP Goat Anti-Rabbit IgG (H+L) (STJS000856) at 1:10000 dilution. Lysates/proteins: 25 μ g per lane. Blocking buffer: 3% BSA. Detection: ECL Basic Kit. Exposure time: 3s.

This product is suitable for in-vitro studies under the RESEARCH USE ONLY [RUO] licence. This product must not be used as for diagnostic or other medical purposes.
St John's Laboratory Ltd, Knowledge Dock Business Centre, University Way, London, E16 2RD | Tel: 0208 223 3081