

Anti-Phospho-JUN-T91 antibody [S2MR] (STJ11102592)

STJ11102592

GENERAL INFORMATION

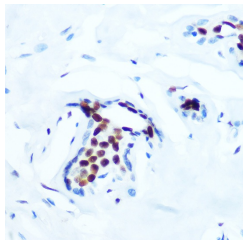
Product Type	Primary antibodies
Short Description	
Applications	WB/IHC-P/ELISA
Host/Source	Rabbit
Reactivity	Human/Mouse/Rat

PRODUCT PROPERTIES

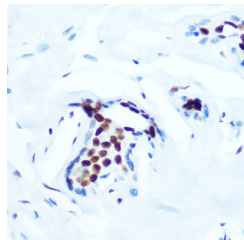
Clonality	Monoclonal
Clone ID	S2MR
Concentration	Lot specific
Conjugation	Unconjugated
Purification	Affinity purification
Dilution Range	WB:1:500-1:2000 IHC-P:1:50-1:200 ELISA:Recommended starting concentration is 1 Mu g/mL. Please optimize the concentration based on your specific assay requirements.
Formulation	PBS with 0.02% Sodium Azide, 0.05% BSA, 50% Glycerol, pH 7.3.
Isotype	IgG
Storage Instruction	Store at -20°C for up to 1 year from the date of receipt, and avoid repeat freeze-thaw cycles.

TARGET INFORMATION

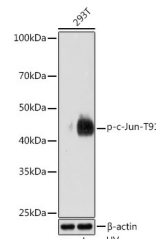
Gene ID	3725
Gene Symbol	JUN
Uniprot ID	JUN_HUMAN
Immunogen	TTTPT
Immunogen Region	
Specificity	A synthetic phosphorylated peptide around T91 of human c-Jun (P05412).
Immunogen Sequence	TTTPT



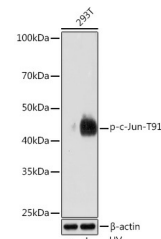
Western blot analysis of extracts of NIH/3T3 cells, using Phospho-c-Jun-T91 rabbit monoclonal antibody (STJ11102592) at 1:1000 dilution. NIH/3T3 cells were treated by UV at room temperature for 15-30 minutes or treated by Anisomycin (25 ug/mL) at 37 °C for 30 minutes. Secondary antibody: HRP Goat Anti-rabbit IgG (H+L) at 1:10000 dilution. Lysates/proteins: 25ug per lane. Blocking buffer: 3% BSA. Detection: ECL Basic Kit. Exposure time: 30s.



Immunohistochemistry analysis of paraffin-embedded human breast using Phospho-c-Jun-T91 Rabbit monoclonal antibody (STJ11102592) at dilution of 1:100 (40x lens). Perform microwave antigen retrieval with 10 mM Tris/EDTA buffer pH 9.0 before commencing with immunohistochemistry staining protocol.



Western blot analysis of extracts of 293T cells, using Phospho-c-Jun-T91 rabbit monoclonal antibody (STJ11102592) at 1:1000 dilution. 293T cells were treated by UV at room temperature for 15-30 minutes. Secondary antibody: HRP Goat Anti-rabbit IgG (H+L) at 1:10000 dilution. Lysates/proteins: 25ug per lane. Blocking buffer: 3% BSA. Detection: ECL Enhanced Kit. Exposure time: 3min.



Western blot analysis of extracts of 293T cells, using Phospho-c-Jun-T91 Rabbit monoclonal antibody (STJ11102592) at 1:1000 dilution. 293T cells were treated by UV at room temperature for 15-30 minutes. Secondary antibody: HRP Goat Anti-Rabbit IgG (H+L) (STJS000856) at 1:10000 dilution. Lysates/proteins: 25 Mu g per lane. Blocking buffer: 3% BSA. Detection: ECL Enhanced Kit. Exposure time: 3min.

This product is suitable for in-vitro studies under the RESEARCH USE ONLY [RUO] licence. This product must not be used as for diagnostic or other medical purposes.
St John's Laboratory Ltd, Knowledge Dock Business Centre, University Way, London, E16 2RD | Tel: 0208 223 3081