

## Anti-Phospho-STAT1-S727 antibody [S9MR] (STJ11102589)

STJ11102589

### GENERAL INFORMATION

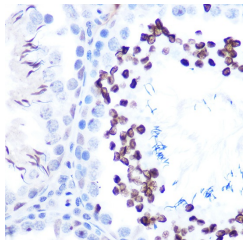
<b>Product Type</b>	Primary antibodies
<b>Short Description</b>	
<b>Applications</b>	WB/IHC-P/ELISA
<b>Host/Source</b>	Rabbit
<b>Reactivity</b>	Human/Mouse/Rat

### PRODUCT PROPERTIES

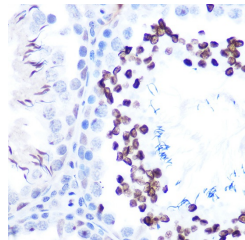
<b>Clonality</b>	Monoclonal
<b>Clone ID</b>	S9MR
<b>Concentration</b>	Lot specific
<b>Conjugation</b>	Unconjugated
<b>Purification</b>	Affinity purification
<b>Dilution Range</b>	WB:1:500-1:1000 IHC-P:1:50-1:200 ELISA:Recommended starting concentration is 1 Mu g/mL. Please optimize the concentration based on your specific assay requirements.
<b>Formulation</b>	PBS with 0.02% Sodium Azide, 0.05% BSA, 50% Glycerol, pH 7.3.
<b>Isotype</b>	IgG
<b>Storage Instruction</b>	Store at -20°C for up to 1 year from the date of receipt, and avoid repeat freeze-thaw cycles.

### TARGET INFORMATION

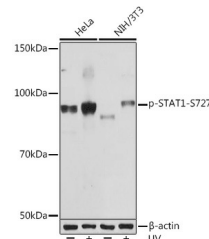
<b>Gene ID</b>	6772
<b>Gene Symbol</b>	STAT1
<b>Uniprot ID</b>	STAT1_HUMAN
<b>Immunogen</b>	PMSPE
<b>Immunogen Region</b>	
<b>Specificity</b>	A synthetic phosphorylated peptide around S727 of human STAT1 (P42224).
<b>Immunogen Sequence</b>	PMSPE



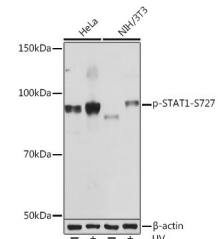
Western blot analysis of extracts of various cell lines, using Phospho-STAT1-S727 rabbit monoclonal antibody (STJ11102589) at 1:1000 dilution. Both HeLa cells and NIH/3T3 cells were treated by UV at room temperature for 15-30 minutes. Secondary antibody: HRP Goat Anti-rabbit IgG (H+L) at 1:10000 dilution. Lysates/proteins: 25ug per lane. Blocking buffer: 3% BSA. Detection: ECL Basic Kit. Exposure time: 1min.



Immunohistochemistry analysis of paraffin-embedded rat testis using Phospho-STAT1-S727 Rabbit monoclonal antibody (STJ11102589) at dilution of 1:100 (40x lens). Perform microwave antigen retrieval with 10 mM Tris/EDTA buffer pH 9.0 before commencing with immunohistochemistry staining protocol.



Immunohistochemistry of paraffin-embedded human esophageal cancer using Phospho-STAT1-S727 rabbit monoclonal antibody (STJ11102589) at dilution of 1:100 (40x lens).



Western blot analysis of extracts of various cell lines, using Phospho-STAT1-S727 Rabbit monoclonal antibody (STJ11102589) at 1:1000 dilution. Both HeLa cells and NIH/3T3 cells were treated by UV at room temperature for 15-30 minutes. Secondary antibody: HRP Goat Anti-Rabbit IgG (H+L) (STJ5000856) at 1:10000 dilution. Lysates/proteins: 25 Mu g per lane. Blocking buffer: 3% BSA. Detection: ECL Basic Kit. Exposure time: 1min.