

Anti-Phospho-MAPK1/MAPK3-T202/Y204 & T185/Y187 antibody [S8MR] (STJ11102568)

STJ11102568

GENERAL INFORMATION

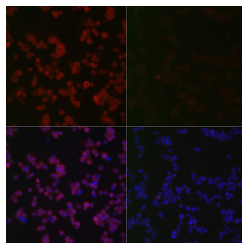
Product Type	Primary antibodies
Short Description	
Applications	WB/IHC-P/IF/ICC/ELISA
Host/Source	Rabbit
Reactivity	Human/Mouse/Rat

PRODUCT PROPERTIES

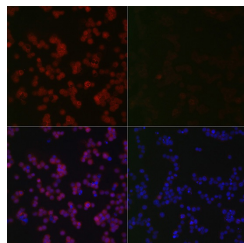
Clonality	Monoclonal
Clone ID	S8MR
Concentration	Lot specific
Conjugation	Unconjugated
Purification	Affinity purification
Dilution Range	WB:1:500-1:2000 IHC-P:1:50-1:200 IF/ICC:1:50-1:200 ELISA:Recommended starting concentration is 1 µg/mL. Please optimize the concentration based on your specific assay requirements.
Formulation	PBS with 0.05% Proclin300, 0.05% BSA, 50% Glycerol, pH 7.3.
Isotype	IgG
Storage Instruction	Store at -20°C for up to 1 year from the date of receipt, and avoid repeat freeze-thaw cycles.

TARGET INFORMATION

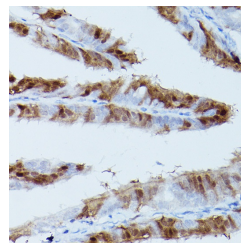
Gene ID	5594 5595
Gene Symbol	MAPK1 MAPK3
Uniprot ID	MK01_HUMAN MK03_HUMAN
Immunogen	LTEYV
Immunogen Region	
Specificity	A synthetic phosphorylated peptide around T202 & Y204 of human ERK1 (P27361).
Immunogen Sequence	LTEYV



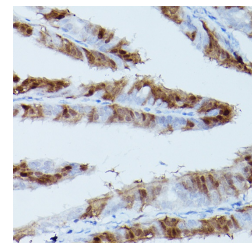
Western blot analysis of extracts of various cell lines, using Phospho-ERK1-T202/Y204 + ERK2-T185/Y187 rabbit monoclonal antibody (STJ11102568) at 1:1000 dilution. Both 293T cells and NIH/3T3 cells were treated by ATP (5 mM) at 30 °C for 1 hour. Secondary antibody: HRP Goat Anti-rabbit IgG (H+L) at 1:10000 dilution. Lysates/proteins: 25µg per lane. Blocking buffer: 3% BSA. Detection: ECL Basic Kit. Exposure time: 10s.



Immunofluorescence analysis of Jurkat cells (treated with PMA) and Jurkat cells (untreated), using Phospho-ERK1-T202/Y204 + ERK2-T185/Y187 Rabbit monoclonal antibody (STJ11102568) at dilution of 1:100 (40x lens). Secondary antibody: Cy3 Goat Anti-Rabbit IgG (H+L) at 1:500 dilution. Blue: DAPI for nuclear staining.



Western blot analysis of extracts of C6 cells, using Phospho-ERK1-T202/Y204 + ERK2-T185/Y187 rabbit monoclonal antibody (STJ11102568) at 1:1000 dilution. C6 cells were treated by PMA/TPA (200 nM) at 37 °C for 30 minutes after serum-starvation overnight. Secondary antibody: HRP Goat Anti-rabbit IgG (H+L) at 1:10000 dilution. Lysates/proteins: 25µg per lane. Blocking buffer: 3% BSA. Detection: ECL Enhanced Kit. Exposure time: 90s.



Immunohistochemistry analysis of Phospho-ERK1-T202/Y204 + ERK2-T185/Y187 in paraffin-embedded rat fallopian tube using Phospho-ERK1-T202/Y204 + ERK2-T185/Y187 Rabbit monoclonal antibody (STJ11102568) at dilution of 1:100 (40x lens). Perform high pressure antigen retrieval with 10 mM citrate buffer pH 6.0 before commencing with immunohistochemistry staining protocol.

This product is suitable for in-vitro studies under the RESEARCH USE ONLY [RUO] licence. This product must not be used as for diagnostic or other medical purposes.
St John's Laboratory Ltd, Knowledge Dock Business Centre, University Way, London, E16 2RD | Tel: 0208 223 3081