

Anti-Phospho-Smad3-S423/S425 antibody [S6MR] (STJ11102566)

STJ11102566

GENERAL INFORMATION

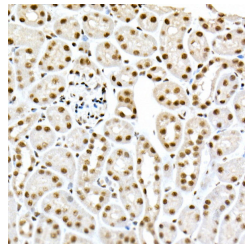
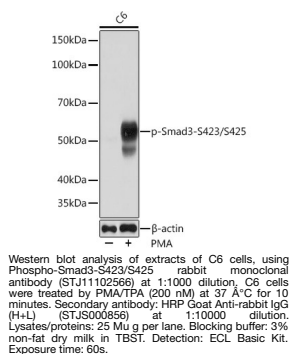
Product Type	Primary antibodies
Short Description	
Applications	WB/IHC-P/ELISA
Host/Source	Rabbit
Reactivity	Human/Mouse/Rat

PRODUCT PROPERTIES

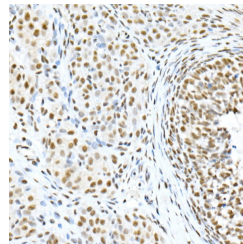
Clonality	Monoclonal
Clone ID	S6MR
Concentration	Lot specific
Conjugation	Unconjugated
Purification	Affinity purification
Dilution Range	WB:1:500-1:2000 IHC-P:1:50-1:200 ELISA:Recommended starting concentration is 1 Mu g/mL. Please optimize the concentration based on your specific assay requirements.
Formulation	PBS with 0.02% Sodium Azide, 0.05% BSA, 50% Glycerol, pH 7.3.
Isotype	IgG
Storage Instruction	Store at -20°C for up to 1 year from the date of receipt, and avoid repeat freeze-thaw cycles.

TARGET INFORMATION

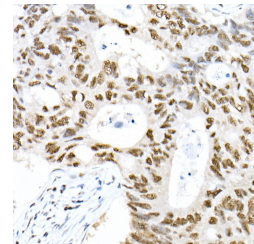
Gene ID	4088
Gene Symbol	SMAD3
Uniprot ID	SMAD3_HUMAN
Immunogen	SSVS
Immunogen Region	
Specificity	A synthetic phosphorylated peptide around S423 & S425 of human Smad3 (P84022).
Immunogen Sequence	SSVS



Immunohistochemistry analysis of paraffin-embedded mouse kidney using Phospho-Smad3-S423/S425 rabbit monoclonal antibody (STJ11102566) at dilution of 1:200 (40x lens). Perform high pressure antigen retrieval with 10 mM citrate buffer pH 6.0 before commencing with immunohistochemistry staining protocol.



Immunohistochemistry analysis of paraffin-embedded rat ovary using Phospho-Smad3-S423/S425 rabbit monoclonal antibody (STJ11102566) at dilution of 1:200 (40x lens). Perform high pressure antigen retrieval with 10 mM citrate buffer pH 6.0 before commencing with immunohistochemistry staining protocol.



Immunohistochemistry analysis of paraffin-embedded human colon carcinoma using Phospho-Smad3-S423/S425 rabbit monoclonal antibody (STJ11102566) at dilution of 1:200 (40x lens). Perform high pressure antigen retrieval with 10 mM citrate buffer pH 6.0 before commencing with immunohistochemistry staining protocol.