

Anti-Phospho-IRS1-S612 antibody (STJ11102560)

STJ11102560

GENERAL INFORMATION

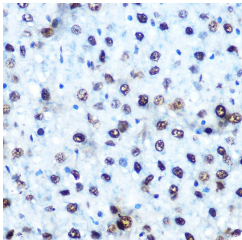
Product Type	Primary antibodies
Short Description	
Applications	WB/IHC-P/ELISA
Host/Source	Rabbit
Reactivity	Human/Mouse/Rat

PRODUCT PROPERTIES

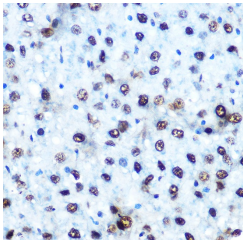
Clonality	Polyclonal
Clone ID	
Concentration	Lot specific
Conjugation	Unconjugated
Purification	Affinity purification
Dilution Range	WB:1:500-1:1000 IHC-P:1:50-1:200 ELISA:Recommended starting concentration is 1 µg/mL. Please optimize the concentration based on your specific assay requirements.
Formulation	PBS with 0.02% Sodium Azide, 50% Glycerol, pH 7.3.
Isotype	IgG
Storage Instruction	Store at -20°C for up to 1 year from the date of receipt, and avoid repeat freeze-thaw cycles.

TARGET INFORMATION

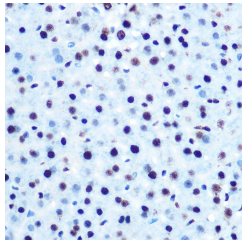
Gene ID	3667
Gene Symbol	IRS1
Uniprot ID	IRS1_HUMAN
Immunogen	PMSPG
Immunogen Region	
Specificity	A synthetic phosphorylated peptide around S612 of human IRS1 (NP_005535.1).
Immunogen Sequence	PMSPG



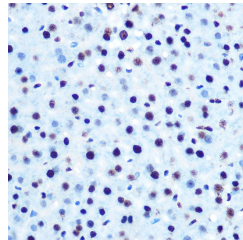
Western blot analysis of extracts of C2C12 cells, using Phospho-IRS1-S612 antibody (STJ11102560) at 1:1000 dilution. C2C12 cells were treated by PMA/TPA (200 nM) at 37 °C for 30 minutes after serum-starvation overnight. Secondary antibody: HRP Goat Anti-rabbit IgG (H+L) at 1:10000 dilution. Lysates/proteins: 25µg per lane. Blocking buffer: 3% non-fat dry milk in TBST. Detection: ECL Enhanced Kit. Exposure time: 300s.



Immunohistochemistry analysis of Phospho-IRS1-S612 in paraffin-embedded rat liver using Phospho-IRS1-S612 Rabbit polyclonal antibody (STJ11102560) at dilution of 1:100 (40x lens). Perform microwave antigen retrieval with 10 mM Tris/EDTA buffer pH 9.0 before commencing with immunohistochemistry staining protocol.



Immunohistochemistry of paraffin-embedded human colon using Phospho-IRS1-S612 rabbit polyclonal antibody (STJ11102560) at dilution of 1:100 (40x lens).



Immunohistochemistry analysis of Phospho-IRS1-S612 in paraffin-embedded mouse liver using Phospho-IRS1-S612 Rabbit polyclonal antibody (STJ11102560) at dilution of 1:100 (40x lens). Perform microwave antigen retrieval with 10 mM Tris/EDTA buffer pH 9.0 before commencing with immunohistochemistry staining protocol.

This product is suitable for in-vitro studies under the RESEARCH USE ONLY [RUO] licence. This product must not be used as for diagnostic or other medical purposes.
St John's Laboratory Ltd, Knowledge Dock Business Centre, University Way, London, E16 2RD | Tel: 0208 223 3081