

Anti-Phospho-RPS6KB1-T421/S424 antibody [S8MR] (STJ11102558)

GENERAL INFORMATION

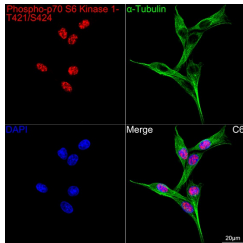
Product Type	Primary antibodies
Short Description	
Applications	WB/IHC-P/IF/ICC/ELISA
Host/Source	Rabbit
Reactivity	Human/Mouse/Rat

PRODUCT PROPERTIES

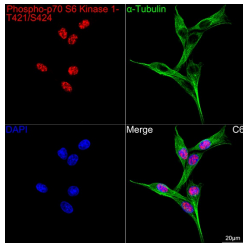
Clonality	Monoclonal
Clone ID	S8MR
Concentration	Lot specific
Conjugation	Unconjugated
Purification	Affinity purification
Dilution Range	WB:1:500-1:1000 IHC-P:1:50-1:200 IF/ICC:1:50-1:200 ELISA:Recommended starting concentration is 1 Mu g/mL. Please optimize the concentration based on your specific assay requirements.
Formulation	PBS with 0.02% Sodium Azide, 0.05% BSA, 50% Glycerol, pH 7.3.
Isotype	IgG
Storage	Store at -20°C for up to 1 year from the date of receipt, and avoid repeat freeze-thaw cycles.
Instruction	

TARGET INFORMATION

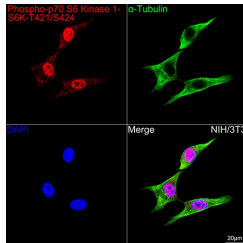
Gene ID	6198
Gene Symbol	RPS6KB1
Uniprot ID	KS6B1_HUMAN
Immunogen	SVKEKFSFEPKIRSPRRFIG SPRTVPSPVKFSPGDFWGRG ASASTANPQTPVEYPMETSG IEQMDVTMSGEASAPLPIRQ PNSGPYKKQAFPMISKRPEH LRMNL
Immunogen Region	
Specificity	A synthetic phosphorylated peptide around T421&S424 of human Phospho S6K1 (NP_001258989.1).
Immunogen Sequence	SVKEKFSFEPKIRSPRRFIG SPRTVPSPVKFSPGDFWGRG ASASTANPQTPVEYPMETSG IEQMDVTMSGEASAPLPIRQ PNSGPYKKQAFPMISKRPEH LRMNL



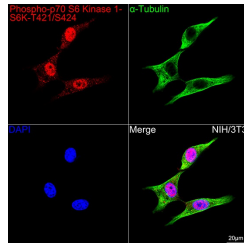
Western blot analysis of extracts of various cell lines, using Phospho-p70 S6 Kinase 1-T421/S424 rabbit monoclonal antibody (STJ11102558) at 1:1000 dilution. NIH/3T3 and C6 cells were treated by 10% FBS at 37 °C for 30 minutes after serum-starvation overnight. Secondary antibody: HRP Goat Anti-rabbit IgG (H+L) at 1:10000 dilution. Lanes: proteins: 25ug per lane. Blocking buffer: 3% non-fat dry milk in TBST. Detection: ECL Basic Kit. Exposure time: 60S.



Confocal imaging of C6 cells using Phospho-p70 S6 Kinase 1-T421/S424 Rabbit monoclonal antibody (STJ11102558, dilution 1:200) followed by a further incubation with Cy3 Goat Anti-Rabbit IgG (H+L) (dilution 1:500) (Red). The cells were counterstained with Alpha-Tubulin Mouse monoclonal antibody (dilution 1:400) followed by incubation with ABToA@488-conjugated Goat Anti-Mouse IgG (H+L) antibody (dilution 1:500) (Green). DAPI was used for nuclear staining (Blue). Objective: 100x.



Immunohistochemistry of paraffin-embedded rat brain using Phospho-p70 S6 Kinase 1-T421/S424 antibody (STJ11102558) at dilution of 1:100 (40x lens).



Confocal imaging of NIH/3T3 cells using Phospho-p70 S6 Kinase 1-T421/S424 Rabbit monoclonal antibody (STJ11102558, dilution 1:200) followed by a further incubation with Cy3 Goat Anti-Rabbit IgG (H+L) (dilution 1:500) (Red). The cells were counterstained with Alpha-Tubulin Mouse monoclonal antibody (dilution 1:400) followed by incubation with ABToA@488-conjugated Goat Anti-Mouse IgG (H+L) antibody (dilution 1:500) (Green). DAPI was used for nuclear staining (Blue). Objective: 100x.