

Anti-Phospho-ERK1/ERK2-T202/T185 antibody [S6MR] (STJ11102556)

STJ11102556

GENERAL INFORMATION

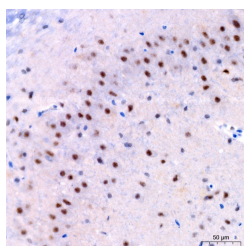
Product Type	Primary antibodies
Short Description	
Applications	WB/IHC-P/ELISA
Host/Source	Rabbit
Reactivity	Human/Mouse/Rat

PRODUCT PROPERTIES

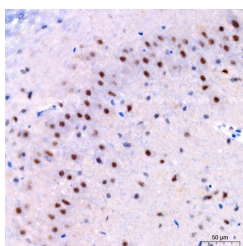
Clonality	Monoclonal
Clone ID	S6MR
Concentration	Lot specific
Conjugation	Unconjugated
Purification	Affinity purification
Dilution Range	WB:1:500-1:2000 IHC-P:1:50-1:200 ELISA:Recommended starting concentration is 1 µg/g/mL. Please optimize the concentration based on your specific assay requirements.
Formulation	PBS with 0.02% Sodium Azide, 0.05% BSA, 50% Glycerol, pH 7.3.
Isotype	IgG
Storage Instruction	Store at -20°C for up to 1 year from the date of receipt, and avoid repeat freeze-thaw cycles.

TARGET INFORMATION

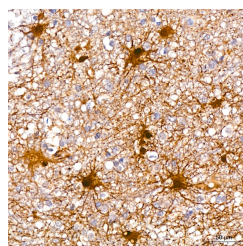
Gene ID	5595 5594
Gene Symbol	MAPK3 MAPK1
Uniprot ID	MK03_HUMAN MK01_HUMAN
Immunogen	FLTEY
Immunogen Region	
Specificity	A synthetic phosphorylated peptide around T202 of human ERK1 (P27361).
Immunogen Sequence	FLTEY



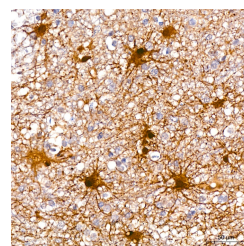
Western blot analysis of extracts of Jurkat cells, using Phospho-ERK1-T202 + ERK2-T185 rabbit monoclonal antibody (STJ11102556) at 1:1000 dilution. Jurkat cells were treated by PMA/TPA (200 nM) at 37 °C for 10 minutes. Secondary antibody: HRP Goat Anti-rabbit IgG (H+L) at 1:10000 dilution. Lysates/proteins: 25µg per lane. Blocking buffer: 3% non-fat dry milk in TBST. Detection: ECL Basic Kit. Exposure time: 10s.



Immunohistochemistry analysis of paraffin-embedded rat brain using Phospho-ERK1-T202 + ERK2-T185 Rabbit monoclonal antibody (STJ11102556) at dilution of 1:200 (40x lens). Perform high pressure antigen retrieval with 10 mM citrate buffer pH 6.0 before commencing with immunohistochemistry staining protocol.



Western blot analysis of extracts of NIH/3T3 cells, using Phospho-ERK1-T202 + ERK2-T185 rabbit monoclonal antibody (STJ11102556) at 1:1000 dilution. NIH/3T3 cells were treated by PMA/TPA (200 nM) at 37 °C for 30 minutes after serum-starvation overnight. Secondary antibody: HRP Goat Anti-rabbit IgG (H+L) at 1:10000 dilution. Lysates/proteins: 25µg per lane. Blocking buffer: 3% non-fat dry milk in TBST. Detection: ECL Basic Kit. Exposure time: 1S.



Immunohistochemistry analysis of paraffin-embedded human brain using Phospho-ERK1-T202 + ERK2-T185 Rabbit monoclonal antibody (STJ11102556) at dilution of 1:200 (40x lens). Perform high pressure antigen retrieval with 10 mM citrate buffer pH 6.0 before commencing with immunohistochemistry staining protocol.

This product is suitable for in-vitro studies under the RESEARCH USE ONLY [RUO] licence. This product must not be used as for diagnostic or other medical purposes.

St John's Laboratory Ltd, Knowledge Dock Business Centre, University Way, London, E16 2RD | Tel: 0208 223 3081