

Anti-Phospho-RB1-S780 antibody [S5MR] (STJ11102555)

STJ11102555

GENERAL INFORMATION

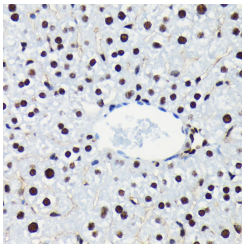
Product Type	Primary antibodies
Short Description	
Applications	WB/IHC-P/ELISA
Host/Source	Rabbit
Reactivity	Human/Mouse/Rat

PRODUCT PROPERTIES

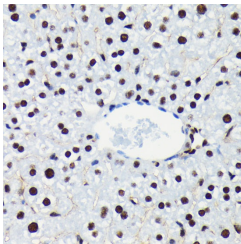
Clonality	Monoclonal
Clone ID	S5MR
Concentration	Lot specific
Conjugation	Unconjugated
Purification	Affinity purification
Dilution Range	WB:1:500-1:2000 IHC-P:1:50-1:200 ELISA:Recommended starting concentration is 1 μ g/mL. Please optimize the concentration based on your specific assay requirements.
Formulation	PBS with 0.05% Proclin300, 0.05% BSA, 50% Glycerol, pH 7.3.
Isotype	IgG
Storage Instruction	Store at -20°C for up to 1 year from the date of receipt, and avoid repeat freeze-thaw cycles.

TARGET INFORMATION

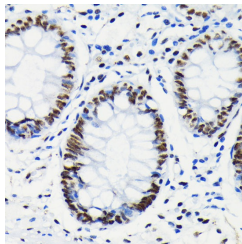
Gene ID	5925
Gene Symbol	RB1
Uniprot ID	RB_HUMAN
Immunogen	TLSPIP
Immunogen Region	
Specificity	A synthetic phosphorylated peptide around S780 of human RB (P06400).
Immunogen Sequence	TLSPIP



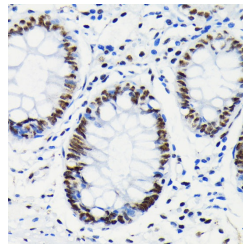
Western blot analysis of extracts of C6 cells, using Phospho-RB-S780 rabbit monoclonal antibody (STJ11102555) at 1:1000 dilution. C6 cells were treated by 10% FBS at 37 °C for 30 minutes after serum-starvation overnight. Secondary antibody: HRP Goat Anti-rabbit IgG (H+L) at 1:10000 dilution. Lysates/proteins: 25ug per lane. Blocking buffer: 5% non-fat dry milk in TBST. Detection: ECL Basic Kit. Exposure time: 10s.



Immunohistochemistry analysis of RB in paraffin-embedded mouse liver using Phospho-Rb-S780 antibody (STJ11102555) at dilution of 1:100 (40x lens). Perform microwave antigen retrieval with 10 mM Tris/EDTA buffer pH 9.0 before commencing with immunohistochemistry staining protocol.



Immunohistochemistry of paraffin-embedded rat pancreas using Phospho-Rb-S780 antibody (STJ11102555) at dilution of 1:100 (40x lens).



Immunohistochemistry analysis of RB in paraffin-embedded human colon using Phospho-Rb-S780 antibody (STJ11102555) at dilution of 1:100 (40x lens). Perform microwave antigen retrieval with 10 mM Tris/EDTA buffer pH 9.0 before commencing with immunohistochemistry staining protocol.